

QATAR AERONAUTICAL CHART - ICAO SCALE 1 : 500.000

Edition : 8th
Effective : 31 March 2016



Published by QATAR CIVIL AVIATION AUTHORITY
Produced by INDIAVIS NUSANTARA
Aeronautical Data from Qatar Aeronautical Information Publication (AIP) Effective 31 MAR 2016
Topographic Data from geopotential.org.qa (07 SEP 2012)

INTERCHART RELATIONSHIP



ONC/TPC Sheet identifier H-6C World Aeronautical Chart Sheet identifier 2547

NOTES / DATA SOURCE
This chart is intended for operational support use. For current operational data please check AIP Aerodrome details in the Qatar AIP.
All Aeronautical Data outside of Qatar are extracted from the most recent data available at the date of issue.

- #### AERODROME
- Civil Land
 - Civil Water
 - Military Land
 - Military Water
 - Joint Civil and Military Land
 - Joint Civil and Military Water
 - Emergency aerodrome or aerodrome with no facilities
 - Abandoned or closed aerodrome
 - Sheltered anchorage
 - Heliport
 - Direction of longest runway

- #### AIRSPACE
- CLASS A AIRSPACE
 - CLASS B/C/D AIRSPACE
 - CLASS E AIRSPACE
 - CLASS F AIRSPACE
 - CLASS G AIRSPACE

- #### RADIO FACILITIES
- NDB (Non-directional radio beacon)
 - VOR (VHF omnidirectional radio range)
 - DME (Distant measuring equipment)
 - VOR/DME (Collocated VOR and DME radio navigation aids)
 - TACAN (UHF tactical air navigation aid)
 - VORTAC (Collocated VOR and TACAN radio navigation aids)

- #### AIRSPACE RESTRICTIONS
- D (Danger) Areas
 - R (Restricted) Areas
 - P (Prohibited) Areas

- #### AIR TRAFFIC SERVICES
- BAHRAIN FIR
 - FIR (Flight Information Region)
 - ATZ (Aerodrome traffic zone)
 - CTR (Control Zone)
 - TMA (Terminal Control Area Traffic Information Area)
 - ADIZ (Air Defense Identification Zone)
 - Parachute Jumping Area with Frequency
 - Ultra-light Activity
 - Hang Glider Activity
 - Glider Operating Areas

- #### CULTURE BUILD-UP AREAS
- City or large town
 - Town
- #### HIGHWAYS AND ROADS
- Primary road
 - Secondary road
 - Rail road

- #### MISCELLANEOUS
- Isogonic line or isogonic
 - Boundaries (international)
 - Telegraph or telephone line
 - Pipeline
 - Oil or gas field
 - Mines And Quarries
 - Oil Well

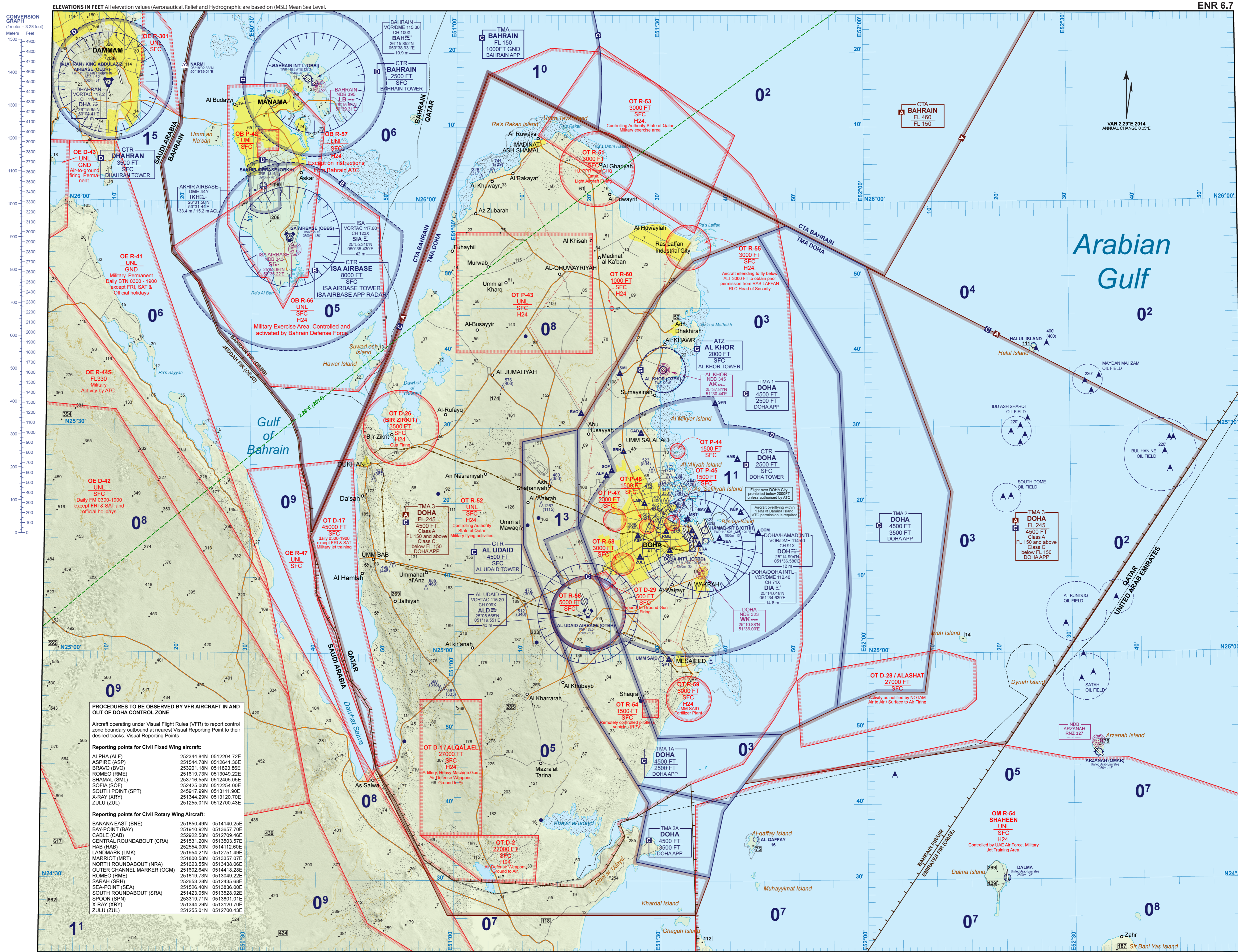
- #### MORSE CODE
- | | | | |
|---|-------|---|-------|
| A | ••••• | S | ••••• |
| B | ••••• | T | ••••• |
| C | ••••• | V | ••••• |
| D | ••••• | W | ••••• |
| E | ••••• | X | ••••• |
| F | ••••• | Y | ••••• |
| G | ••••• | Z | ••••• |
| H | ••••• | | |
| I | ••••• | | |

MAXIMUM ELEVATION FIGURE (MEF)

The Maximum Elevation Figure shown in quadrangles bounded by ticked lines of latitude and longitude are represented in THOUSAND & HUNDREDS of feet above mean sea level.

The MEF is based on information available concerning the highest known feature in each 30' quadrangle, including terrain elevation plus 200 FT and obstructions (trees, towers, antennas, etc.). In areas of extensive unreliable relief the MEF is shown by a note spread across the area.

Example 1000' = 1200 feet



CONVERSION GRAPH (1 meter = 3.28 feet)
Meters Feet

ELEVATIONS IN FEET All elevation values (Aeronautical, Relief and Hydrographic are based on (MSL) Mean Sea Level.

CHANGES : Update Obstacle Data.

PROCEDURES TO BE OBSERVED BY VFR AIRCRAFT IN AND OUT OF DOHA CONTROL ZONE

Aircraft operating under Visual Flight Rules (VFR) to report control zone boundary outbound at nearest Visual Reporting Point to their desired tracks. Visual Reporting Points

Reporting points for Civil Fixed Wing Aircraft:

ALPHA (ALF)	252344.84N	0512204.72E
ASPIRE (ASP)	251544.78N	0512641.36E
BRAVO (BVO)	253201.18N	0511823.86E
ROMEO (RME)	251619.73N	0513049.22E
SHAMAL (SML)	253716.55N	0512405.05E
SOFIA (SOF)	252425.00N	0512254.00E
SOUTH POINT (SPT)	245917.99N	0513111.90E
X-RAY (XRY)	251344.29N	0513120.70E
ZULU (ZUL)	251255.01N	0512700.43E

Reporting points for Civil Rotary Wing Aircraft:

BANANA EAST (BNE)	251850.49N	0514140.25E
BAY-POINT (BAY)	251910.52N	0513657.70E
CABLE (CAB)	252922.58N	0512709.46E
CENTRAL ROUNDABOUT (CRA)	251531.20N	0513503.57E
HAB (HAB)	252554.00N	0514112.60E
LANDMARK (LMK)	251854.21N	0512751.49E
MARRIOT (MRT)	251800.58N	0513537.07E
NORTH ROUNDABOUT (NRA)	251623.55N	0513438.06E
OUTER CHANNEL MARKER (OCM)	251602.54N	0514418.28E
ROMEO (RME)	251619.73N	0513049.22E
SARAH (SRH)	252653.28N	0512435.68E
SEA-POINT (SEA)	251526.40N	0513836.00E
SOUTH ROUNDABOUT (SRA)	251443.59N	0513528.92E
SPOON (SPN)	253319.71N	0513801.01E
X-RAY (XRY)	251344.29N	0513120.70E
ZULU (ZUL)	251255.01N	0512700.43E

