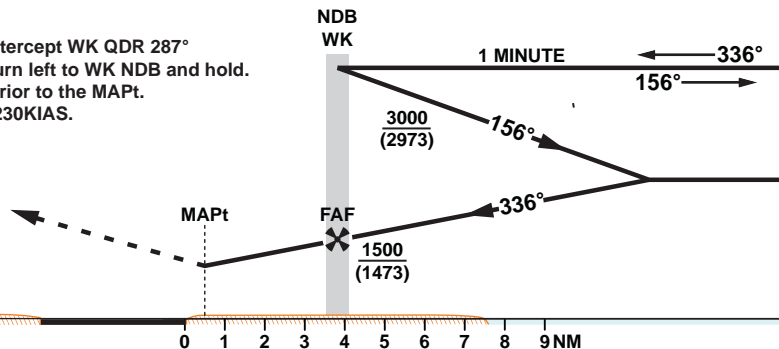


TA 13000

Missed Approach
Turn left as soon as practicable to intercept WK QDR 287° climbing to 2500. On passing 2500 turn left to WK NDB and hold.
Climb and maintain 3000. No turns prior to the MAPt.
Missed Approach speed restriction 230KIAS.



ELEV 27
(THR RWY 33)

OCA (OCH)		A	B	C	D	E	
Straight in Approach	NDB 2.5%MA CG	550 (523)					
	NDB 4.0%MA CG	420 (393)					
Circling		610 (573)	620 (583)	1240 (1203)		1540 (1503)	
Approach: MAPt at 3.4NM from WK NDB (Distance FAF-MAPt)							
Speed	KT	80	100	120	140	160	180
Time	MIN:SEC	2:33	2:02	1:42	1:27	1:17	1:08
	FT/MIN	500	620	740	870	990	1110

Amendment: TWR secondary frequency removed.