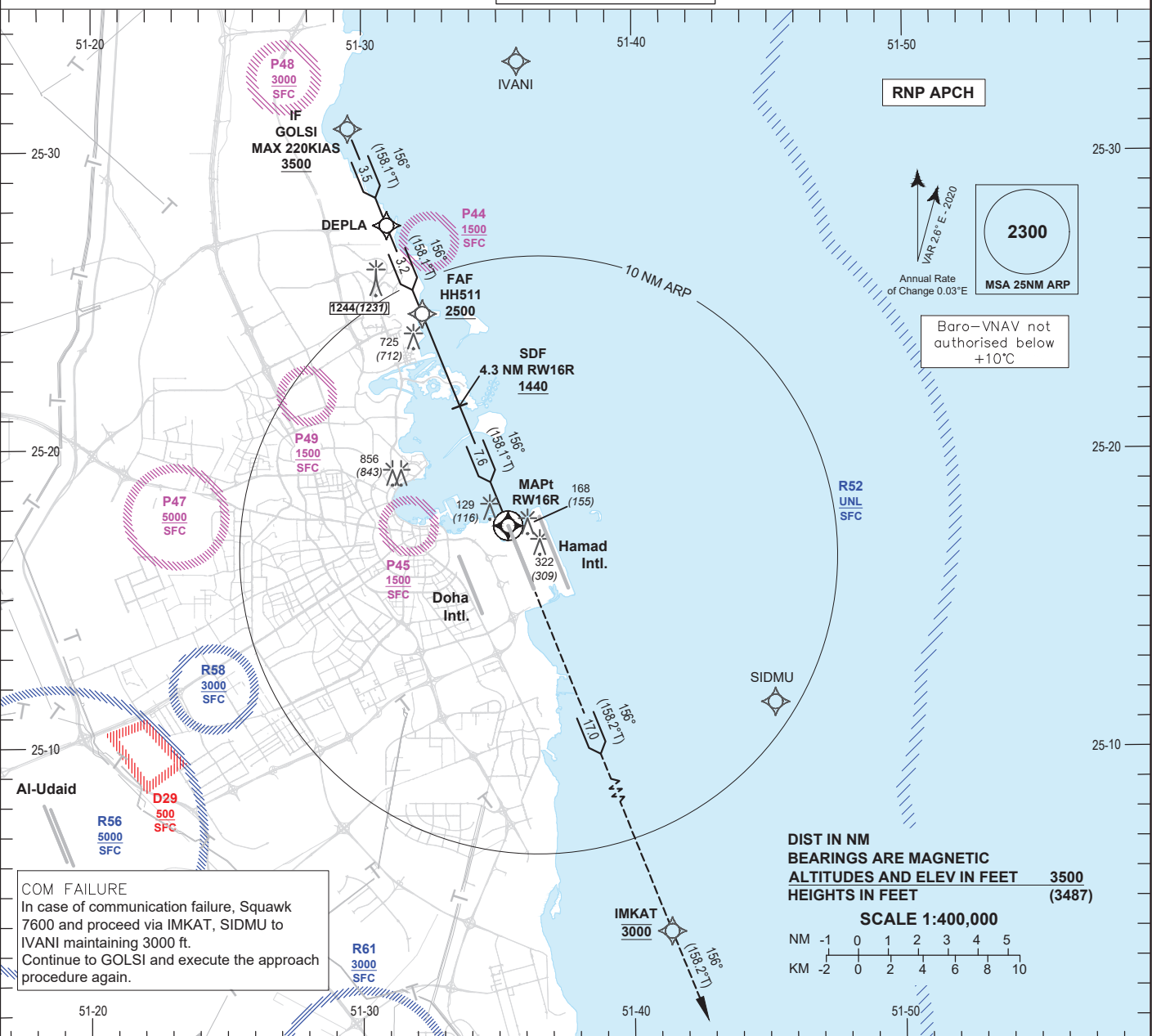


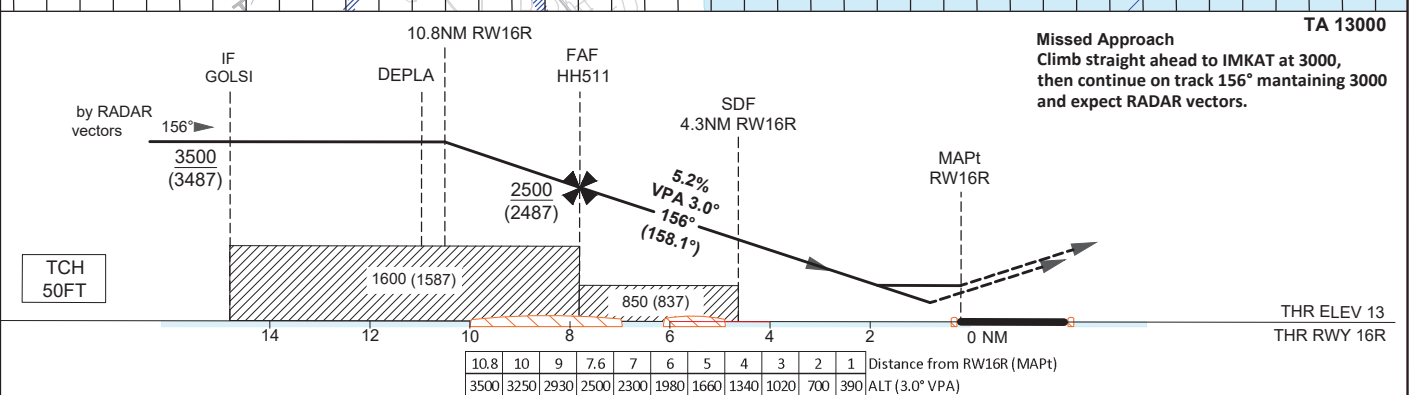
INSTRUMENT APPROACH CHART - ICAO **AD ELEV 13**
HEIGHTS RELATED TO THR RWY 16R - ELEV 13

DOHA RADAR NORTH	121.10 / 121.625
DOHA RADAR SOUTH	120.675 / 119.15
DOHA APP EAST	124.775 / 120.60
DOHA APP WEST	119.725 / 125.125
DOHA DIRECTOR WEST	123.875 / 119.225
HAMAD TWR WEST	118.025 / 118.225

DOHA/Hamad Intl. (OTHH)
RNP RWY16R
ACFT CAT A B C D



COM FAILURE
In case of communication failure, Squawk 7600 and proceed via IMKAT, SIDMU to IVANI maintaining 3000 ft. Continue to GOLS and execute the approach procedure again.



OCA (OCH)		A	B	C	D
Straight in Approach	LNAV/VNAV	270 (257)	290 (277)	310 (297)	330 (317)
	LNAV	430 (417)		1260 (1247)	
Circling		620 (607)		1260 (1247)	

- Expect RADAR vectors to establish on final approach course at GOLS (IF).
- In case of Missed Approach inform ATC immediately.

Approach: MAPt at RW16R

Speed	KT	80	100	120	140	160	180
Time	MIN:SEC	Timing Not Authorized					
RATE OF DESCENT	FT/MIN	420	530	640	740	850	960

Change: New procedure.