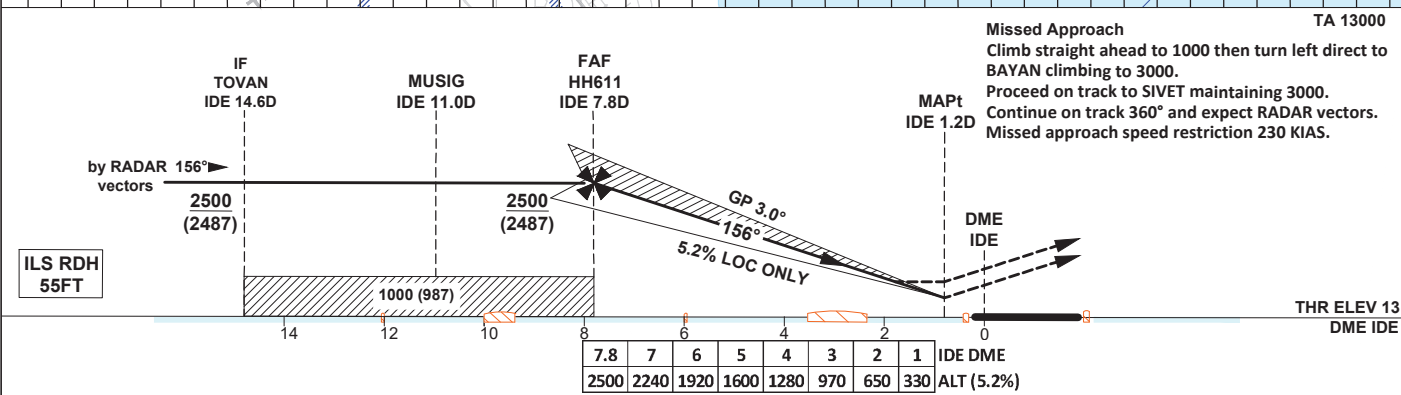
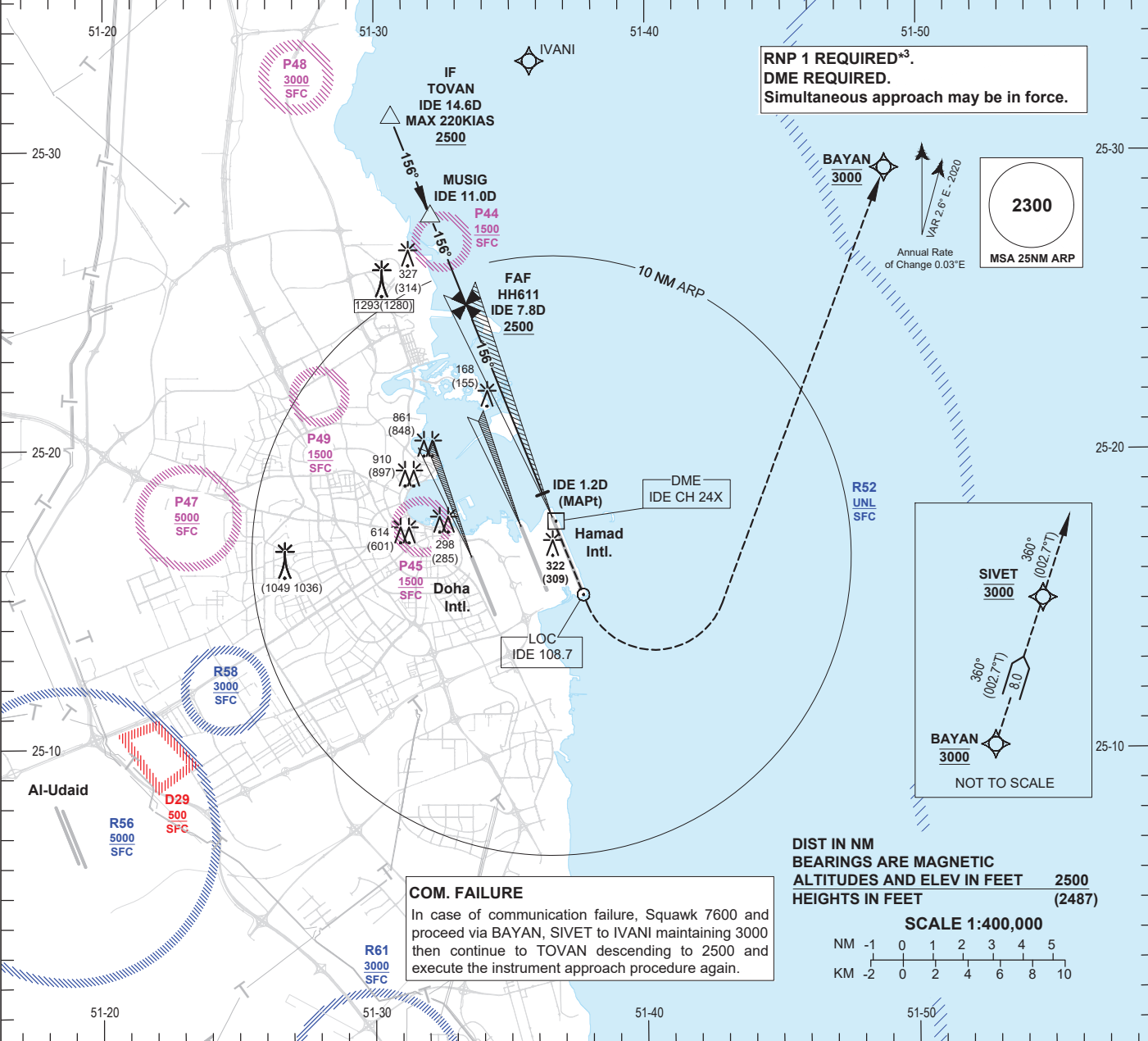


INSTRUMENT APPROACH CHART - ICAO **AD ELEV 13**
HEIGHTS RELATED TO THR RWY 16L - ELEV 13

DOHA RADAR NORTH	121.10 / 121.625
DOHA RADAR SOUTH	120.675 / 119.15
DOHA APP EAST	124.775 / 120.60
DOHA DIRECTOR EAST	119.40 / 121.125
HAMAD TWR EAST	118.525 / 118.225

DOHA/Hamad Intl. (OTHH) ILS RWY16L CAT II & III
ACFT CAT A B C D



	OCA (OCH)	A	B	C	D		
Straight in Approach	ILS CAT I	179 (166)	192 (179)	211 (198)	225 (212)		
	ILS CAT II	79 (66)	92 (79)	102 (89)	119 (106)		
	LOC ONLY	420 (407)					
Circling		620 (607)		1260 (1247)			
1. IDE DME Zero Ranged to TDZ. 2. CAT IIIA and CAT IIIB Approved. 3. *RNP 1 required in the Missed Approach. 4. In case of Missed Approach inform ATC immediately.							
LOC ONLY Approach: MAPt at IDE 1.2D							
Speed	KT	80	100	120	140	160	180
Time	MIN:SEC	Timing Not Authorized					
RATE OF DESCENT	FT/MIN	420	530	640	740	850	960

Change: Intermediate segment MOCA and circling minima. Added P48 and P49. Withdrawn P46.