

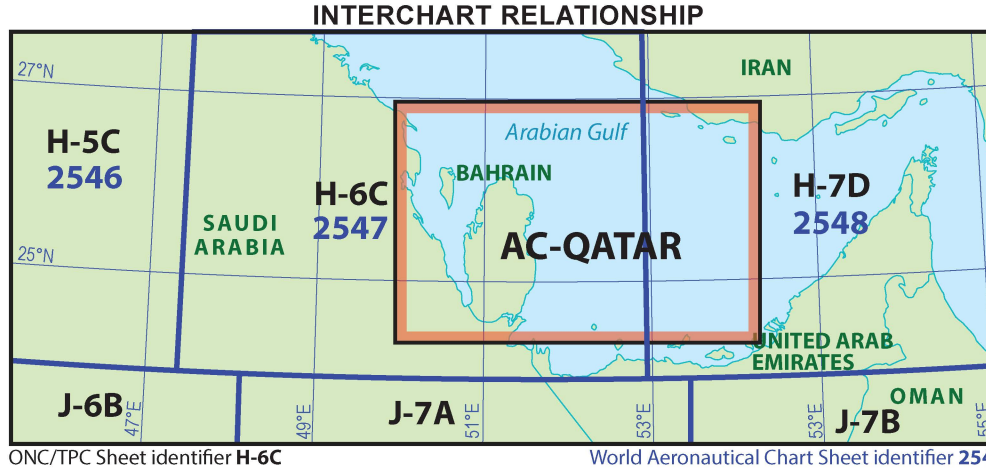
QATAR AERONAUTICAL CHART - ICAO

SCALE 1 : 500,000

Edition : 38th
Effective : 22 Feb 2024



الهيئة العامة للطيران المدني
CIVIL AVIATION AUTHORITY
Produced by: MOHAMMAD NUSANTARA
Aeronautical Data from Qatar Aeronautical Information Publication (AIP) Effective 22 Feb 2024
Topographic Data from geopotential.qatar.gov.qa (update 2022)



NOTES / DATA SOURCE
This chart is intended for operational support use. For current operational data please check AIP Aerodrome details in the Qatar AIP.
All Aeronautical Data outside of Qatar are extracted from the most recent data available at the date of issue.

AERODROME
Civil Land
Military Land
Joint Civil and Military Land
Emergency aerodrome or aerodrome with no facilities
Runway pattern of the aerodrome
Helipad

RADIO NAVIGATION AIDS
NDB (Non-directional radio beacon)
VOR (VHF omnidirectional radio range)
DME (Distance measuring equipment)
VOR/DME (Collocated VOR and DME radio navigation aids)
VORTAC (Collocated VOR and TACAN radio navigation aids)

AIRSPACE
CLASS A AIRSPACE
CLASS B/C/D AIRSPACE
CLASS E AIRSPACE

AIRSPACE RESTRICTIONS
D (Danger) Areas
R (Restricted) Areas
P (Prohibited) Areas

AIR TRAFFIC SERVICES
FIR (Flight Information Region)
CTR (Control Zone)
TMA (Terminal Control Area Traffic Information Area)

SIGNIFICANT POINT
VFR Reporting point

CULTURE BUILD-UP AREAS
City or large town
Town

HIGHWAYS AND ROADS
Major road
Primary road
Secondary road
Rail road

MISCELLANEOUS
Isopleth line or isopleth
Boundaries (international)
Prominent transmission line
Pipeline
Oil or gas field
Mines and quarries
Race track or stadium
Nature Reserved area

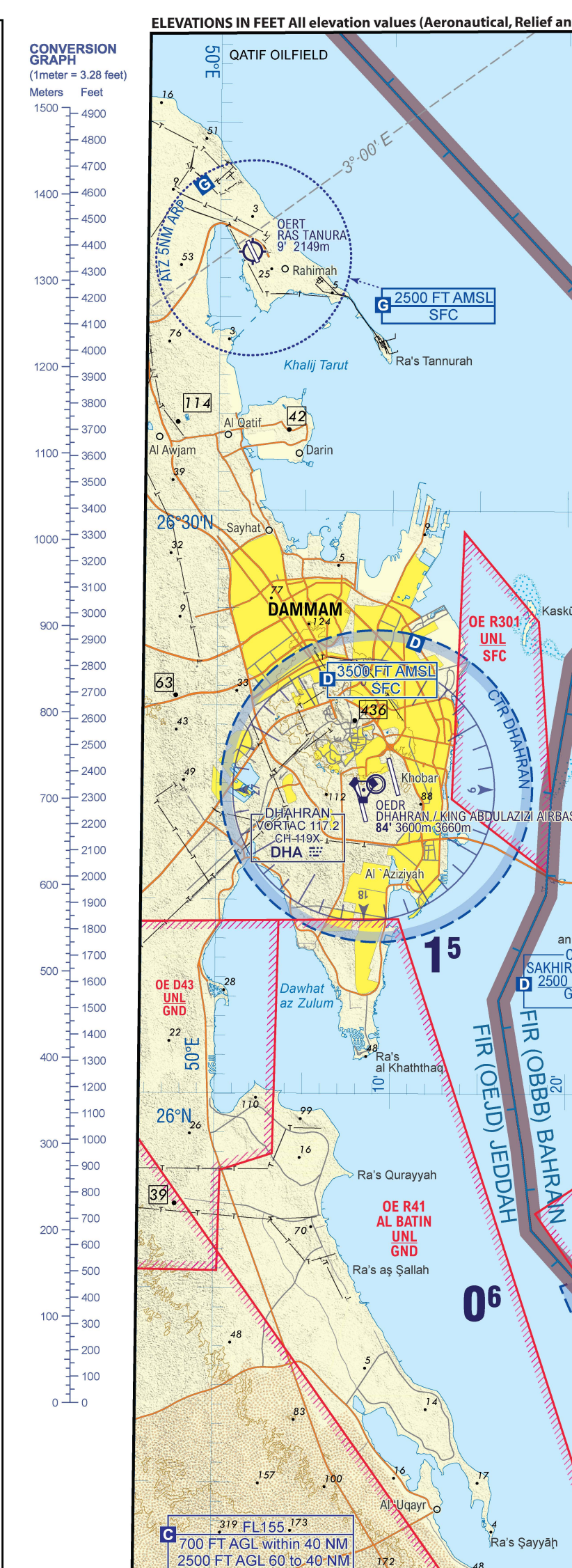
HYDROGRAPHY
Shoreline (reliable)
Lakes (perennial)
Lakes (non-perennial)
Mines and quarries
Coast reefs and ledges

MORSE CODE

GEOREF
Geographical reference system

QATAR CIVIL AVIATION AUTHORITY
Head of Aeronautical Information Services
P.O. Box 73, Doha, Qatar
Phone: +974 412 5666 5677
Fax: +974 412 5666 5678
Web: www.caa.gov.qa
www.aip.qatar.gov.qa

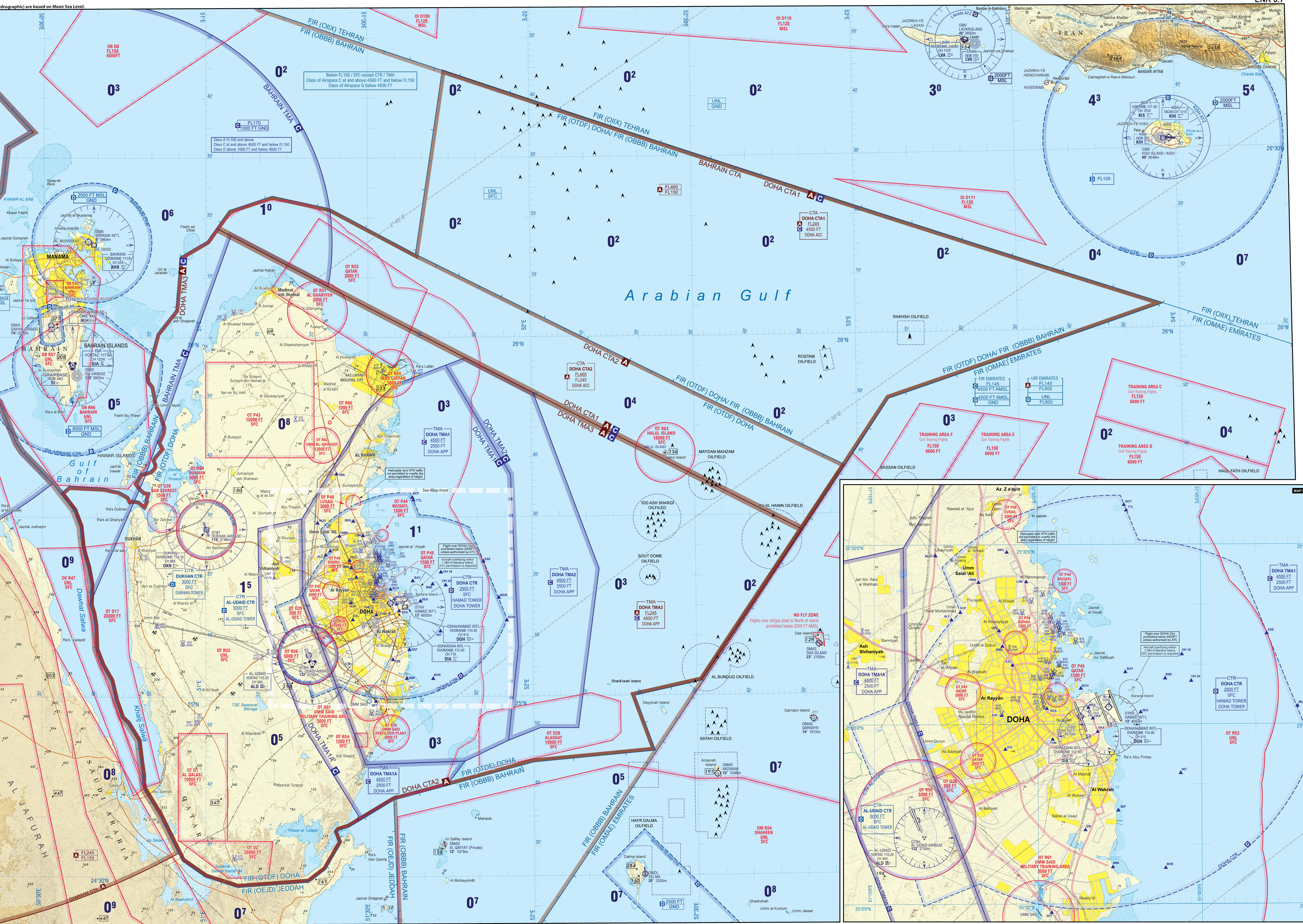
MAXIMUM ELEVATION FIGURE (MEF)
The Maximum Elevation Figure shown in quadrangles bounded by ticked lines of latitude and longitude are represented in THOUSANDS & HUNDREDS of feet above mean sea level.
The MEF is based on information available concerning the highest known feature in each 30' quadrangle, including terrain elevation plus 200 FT and obstructions (towers, antennas, etc.) in areas of extensive unreliable relief the MEF is shown by a note spread across the area.
Example 1000 = 1200 feet



COMMUNICATION FACILITIES (MHZ)		
AL-UDAIAD TOWER	125.500	293.650
DOHA ACC (CTA1)	135.725	133.725
DOHA ACC (CTA2)	132.975	136.475
DOHA APPROACH WEST	119.725	125.125
DOHA APPROACH EAST	124.775	120.600
DOHA DIRECTOR WEST	123.875	119.225
DOHA DIRECTOR EAST	119.400	121.125
DOHA DIRECTOR	124.050	121.775
DOHA RADAR NORTH	121.100	121.625
DOHA RADAR SOUTH	120.675	119.150
DOHA TOWER	118.900	119.025
HAMAD TOWER EAST	118.525	118.225
HAMAD TOWER WEST	118.025	118.225

PROCEDURES TO BE OBSERVED BY VFR AIRCRAFT IN AND OUT OF DOHA CONTROL ZONE		
Aircraft operating under Visual Flight Rules (VFR) to report control zone boundary outbound at nearest Visual Reporting Point to their desired tracks. Visual Reporting Points		
Reporting points for Civil Fixed Wing aircraft		
ALPHA (ALP)	252344.84N	0512204.72E
ASPIRE (ASP)	251544.78N	0512641.36E
THUMAMA (THM)	251344.29N	0513207.70E
RADISSON (RDS)	251619.73N	0513049.22E
CENTRAL ROUNDABOUT (CRA)	251531.20N	0513503.57E
SHAMAL (SMAL)	251715.55N	0512405.05E
SOFIA (SOF)	252425.00N	0512254.00E
SOUTH POINT (SPT)	245917.99N	0513111.90E
ZULU (ZUL)	251255.01N	0512700.43E

Reporting points for Helicopter Route :		
ASPIRE (ASP)	251544.78N	0512641.36E
BANANA EAST (BNE)	251850.49N	0514140.25E
THUMAMA (THM)	251344.29N	0513207.70E
BAY-POINT (BAY)	251923.40N	0513802.40E
BOAT (BOT)	253319.71N	0513901.01E
CENTRAL ROUNDABOUT (CRA)	251531.20N	0513503.57E
DHOW (DOW)	251245.63N	0515515.32E
HAMAMA (HMM)	252653.28N	0512435.68E
EDZAH (EDZ)	251957.21N	0512740.76E
BEACH (BCH)	251800.58N	0513537.07E
NORTH ROUNDABOUT (NRA)	251623.55N	0513438.06E
SEA-POINT (SEA)	251600.00N	0513925.80E
SBAD (SBD)	252922.58N	0512709.46E
SOUTH ROUNDABOUT (SRA)	251423.05N	0513528.92E
RADISSON (RDS)	251619.73N	0513049.22E
TURTLE (TLT)	252521.76N	0513813.34E
ZULU (ZUL)	251255.01N	0512700.43E
ORANGE HOLD 34 (OH 34)	251838.13N	0514404.62E
EASTERN EDGE (ESE)	252233.73N	0515101.55E
ORANGE HOLD 16 (OH 16)	252048.18N	0514313.21E
LUSAL NORTH (LSN)	252064.54N	0512856.63E
DOHA FESTIVAL CITY (DFC)	252247.88N	0512626.50E
NORTH MALL (NML)	252132.68N	0512645.23E
IZBAH (IZB)	250611.69N	0513420.36E
SEEF (SEF)	250750.70N	0513721.72E
INTERCEPT POINT (INT)	251055.73N	0514305.54E
MORLAN (MOR)	251831.50N	0513549.00E
MINA (MIN)	250304.70N	0513653.33E
BAHAR (BHR)	250300.70N	0514141.50E
MAJD (MJD)	252903.69N	0512036.29E



CHANGES : Reporting points Add OTPA9; Withdraw OTPA6.