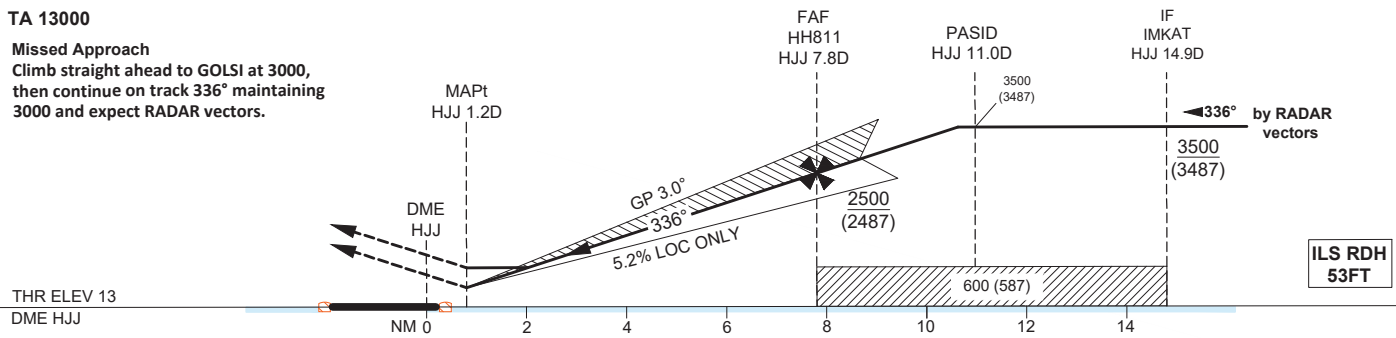


TA 13000

Missed Approach
Climb straight ahead to GOLSI at 3000, then continue on track 336° maintaining 3000 and expect RADAR vectors.



HJJ DME	1	2	3	4	5	6	7	8	9	10	11
ALT (5.2%)	340	660	970	1290	1610	1930	2250	2560	2890	3200	3500

		OCA (OCH)	A	B	C	D
Straight in Approach	ILS CAT I		186 (173)	198 (185)	215 (202)	229 (216)
	ILS CAT II		79 (66)	92 (79)	103 (90)	122 (109)
	LOC ONLY		340 (327)			
Circling			620 (607)		1310(1297)	

1. Simultaneous approach may be in force.
2. HJJ DME Zero ranged at TDZ
3. Expect RADAR vectors to establish on final approach course at IMKAT (IF).
4. Expect Glide Path intercept at PASID at 3500 (3487).
5. CAT IIIA and CAT IIIB Approved.
6. *RNP 1 required in the Missed Approach.
7. In case of Missed Approach inform ATC immediately.

LOC ONLY Approach: MAPt at HJJ 1.2D						
Speed	KT	80	100	120	140	160
Time	MIN:SEC	Timing Not Authorized				
RATE OF DESCENT	FT/MIN	420	530	640	740	850