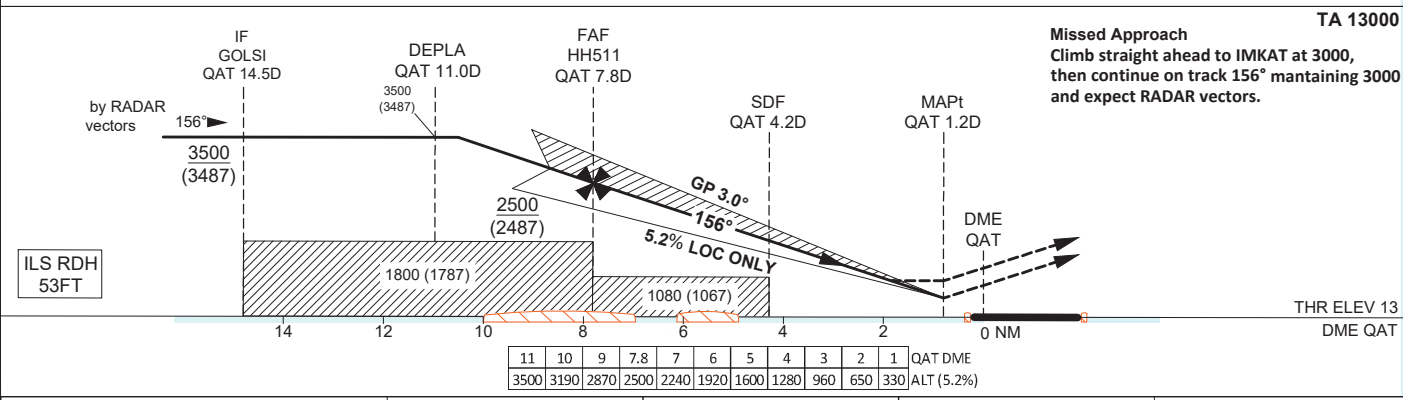
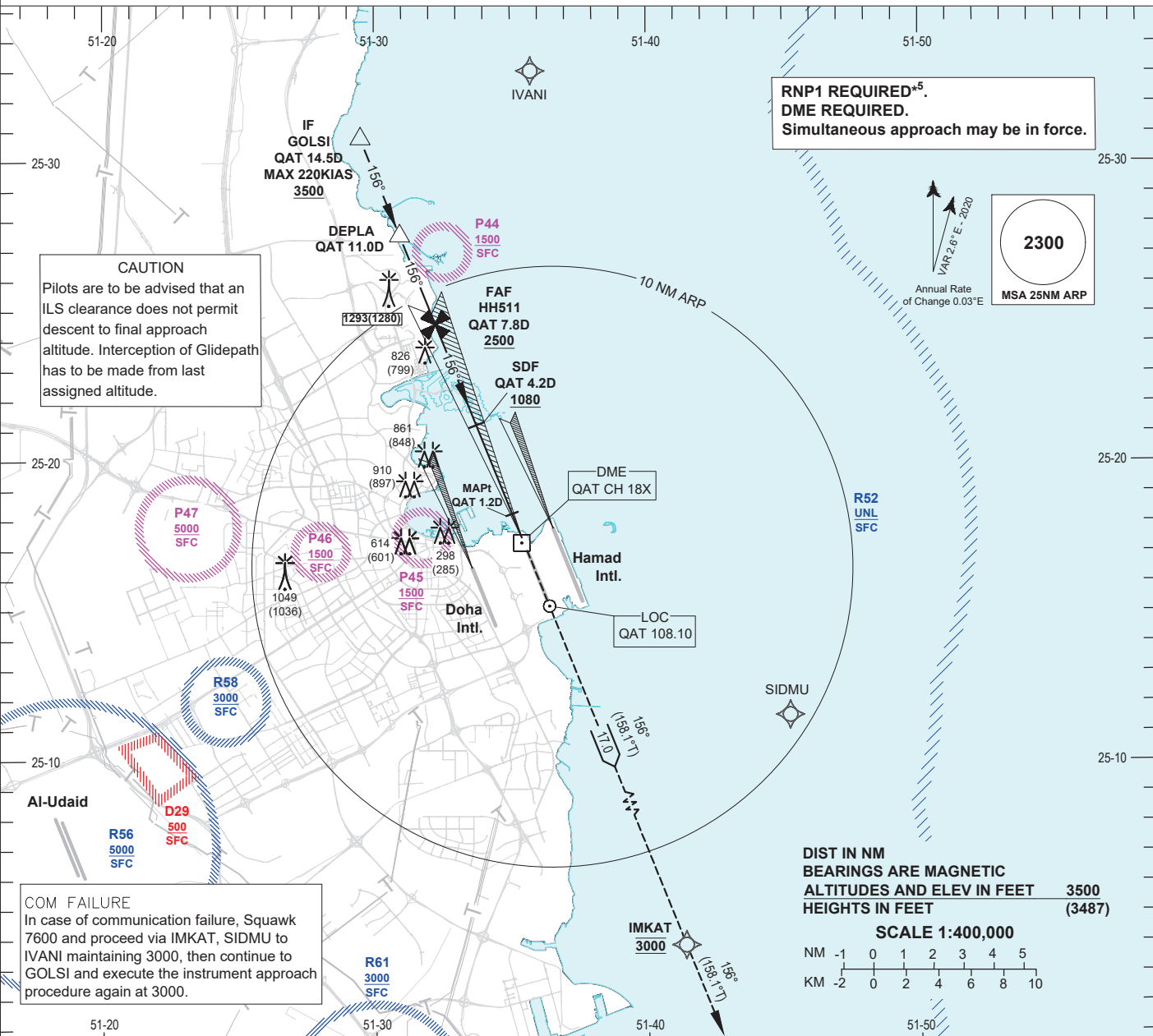


**INSTRUMENT
APPROACH
CHART - ICAO**

**AD ELEV 13
HEIGHTS RELATED TO
THR RWY 16R - ELEV 13**

DOHA RADAR NORTH	121.10 / 121.625	DOHA DIRECTOR WEST	123.875 / 119.225
DOHA RADAR SOUTH	120.675 / 119.15	HAMAD TWR WEST	118.025 / 118.225
DOHA APP EAST	124.775 / 120.60		
DOHA APP WEST	119.725 / 125.125		

**DOHA/Hamad Intl. (OTHH)
ILS RWY16R CAT II & III
ACFT CAT A B C D**



		OCA (OCH)		A		B		C		D	
Straight in Approach	ILS CAT I			183 (170)		196 (183)		213 (200)		228 (215)	
	ILS CAT II			84 (71)		96 (83)		114 (101)		135 (122)	
	LOC ONLY							370 (357)			
Circling				620 (607)				1310 (1297)			

1. QAT DME Zero Ranged to TDZ.
2. Expect RADAR vectors to establish on final approach course at GOLSI (IF).
3. Expect Glide Path intercept at DEPLA at 3500 (3487).
4. CAT IIIA and CAT IIIB Approved.
5. *RNP 1 required in the Missed Approach.
6. In case of Missed Approach inform ATC immediately.

LOC ONLY Approach: MAPt at QAT 1.2D							
Speed	KT	80	100	120	140	160	180
Time	MIN:SEC	Timing Not Authorized					
RATE OF DESCENT	FT/MIN	420	530	640	740	850	960

Change: Crossing altitude at FAF HH511. Add caution note.