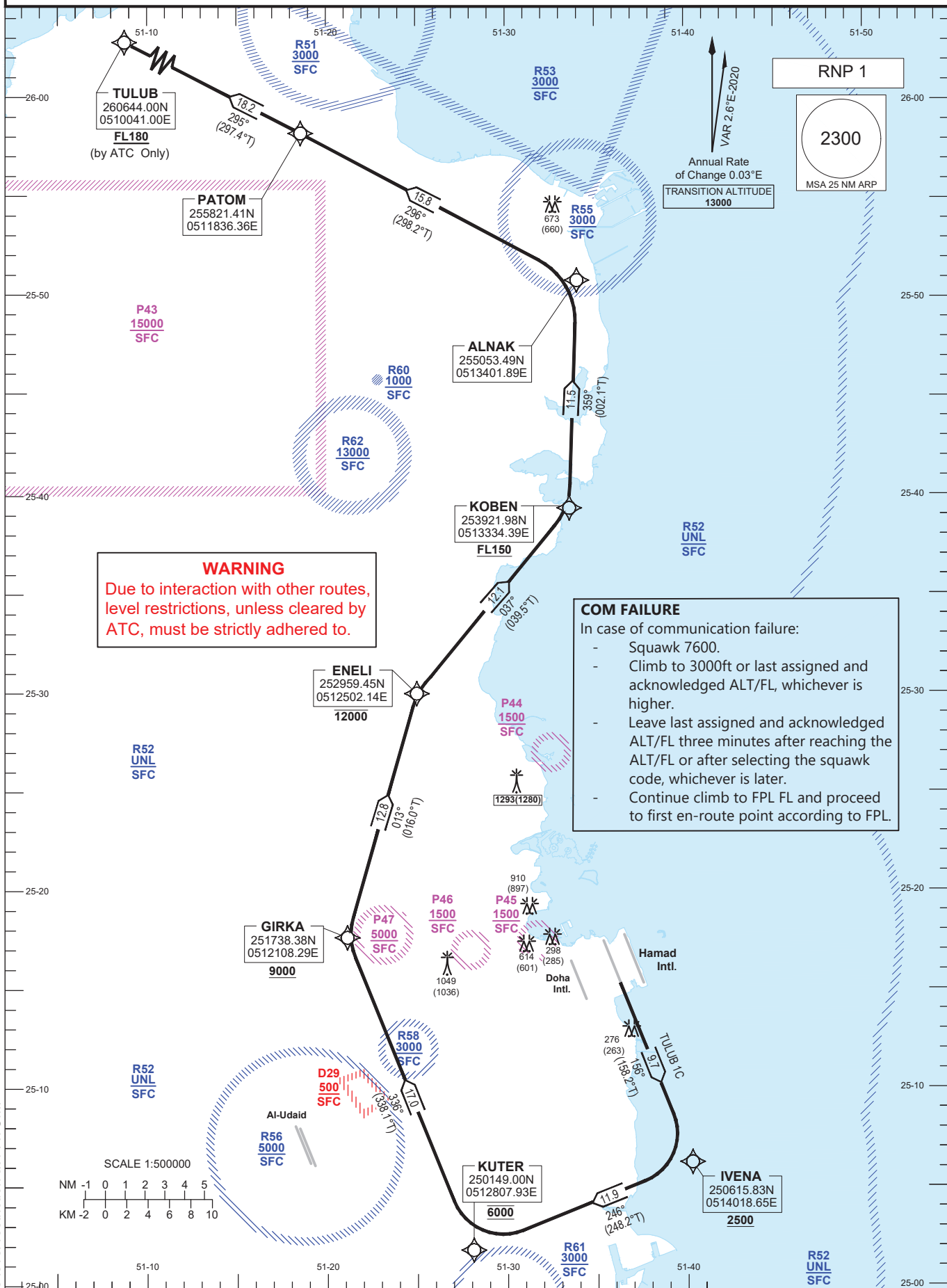


STANDARD DEPARTURE CHART - INSTRUMENT (SID) - ICAO

DIST IN NM
BEARINGS ARE MAGNETIC
ALTITUDES AND ELEV IN FEET

DOHA RADAR NORTH	121.10 / 121.625
DOHA RADAR SOUTH	120.675 / 119.15
DOHA APP WEST	119.725 / 125.125
HAMAD TWR WEST	118.025 / 118.225

**DOHA/Hamad Intl. (OTHH)
RNP RWY 16R
TULUB 1C**



Change: Delete level restriction at PATOM.

Route Designator	Routing
TULUB 1C	IVENA[T158.2;A2500+] - KUTER[A6000] -GIRKA[A9000+] -ENELI[A12000-] KOBEN[F150+] - ALNAK - PATOM - TULUB[F180+]
TULUB at FL180 or above by ATC Only.	