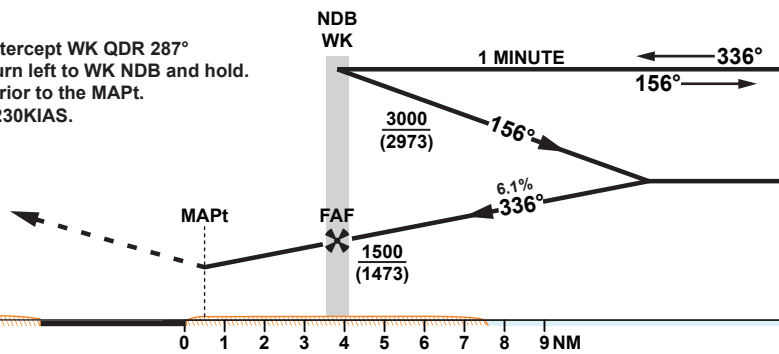


TA 13000

Missed Approach
Turn left as soon as practicable to intercept WK QDR 287° climbing to 2500. On passing 2500 turn left to WK NDB and hold. Climb and maintain 3000. No turns prior to the MAPt. Missed Approach speed restriction 230KIAS.



THR ELEV 27
(THR RWY 33)

OCA (OCH)		A	B	C	D	E
Straight in Approach	NDB 2.5%MA CG	550 (523)				
	NDB 4.0%MA CG	420 (393)				
Circling		720 (683)	910 (873)	1310 (1273)	1550 (1513)	
Approach: MAPt at 3.4NM from WK NDB (Distance FAF-MAPt)						
Speed	KT	80	100	120	140	160 180
Time	MIN:SEC	2:33	2:02	1:42	1:27	1:17 1:08
RATE OF DESCENT	FT/MIN	490	610	740	860	990 1110

Changes: Updated the coordinates of R56.