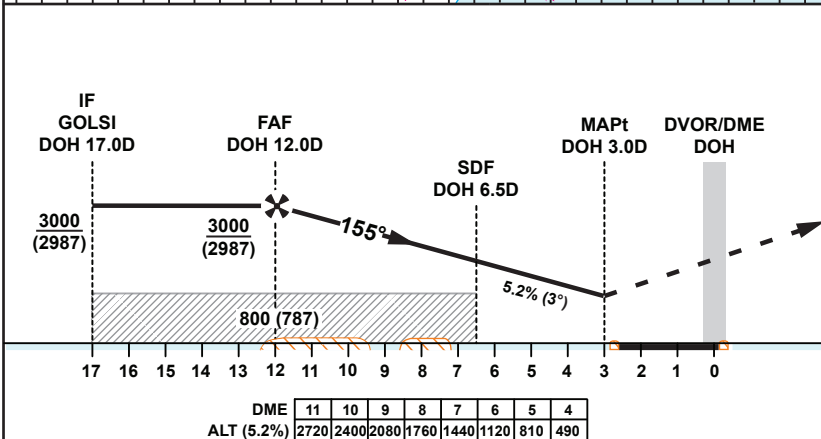


TA 13000

**Missed Approach**  
Climb straight ahead, until DOH, turn right onto DOH R186. At DOH 12.3D turn left to intercept the DOH 14.3D arc anti-clockwise to GENOT and hold. Climb and maintain 2000. Climb in the hold to 3000.  
Missed Approach speed restriction 230KIAS.



ELEV 13  
DME DOH

DME	11	10	9	8	7	6	5	4
ALT (5.2%)	2720	2400	2080	1760	1440	1120	810	490

<b>OCA (OCH)</b>		<b>A</b>	<b>B</b>	<b>C</b>	<b>D</b>
<b>Straight in Approach</b>	<b>VOR</b>	<b>410 (397)</b>			
<b>Circling</b>		<b>620 (607)</b>		<b>1240 (1227)</b>	

1. Aircraft to commence initial Racetrack at 3000 (2987).
2. Racetrack to be used only in case of communications failure.
3. HOLD at GENOT protected for sector 3 Entry only.

<b>VOR Approach: MAPt at DOH 3.0D</b>							
Speed	KT	80	100	120	140	160	180
Time	MIN:SEC	Timing Not Authorized					
Rate of Descent	FT/MIN	420	530	640	740	850	960

Changes: Editorial correction.

**INSTRUMENT  
 APPROACH  
 CHART-ICAO**

**DOHA/Hamad Intl.(OTHH)  
 VOR RWY 16R  
 ACFT CAT A,B,C,D**

**AERONAUTICAL DATA TABULATION**

<b>VOR approach to RWY 16R from GOLSI (IF)</b>	
<b>Fix/Point</b>	<b>Coordinates</b>
<b>GOLSI (IF)</b> - BRG 155.56° / 17.00 NM DOH	253047.17N 0512929.86E
<b>DOH 12.0 D (FAF)</b> - BRG 155.56° / 11.91 NM DOH	252603.30N 0513137.38E
<b>Final approach descent angle</b> - 3.00°	-
<b>DOH 6.5 D (SDF)</b> - BRG 155.56° / 6.50 NM DOH	252101.99N 0513352.54E
<b>DOH 3.0 D (MAPt)</b> - BRG 155.56° / 3.00 NM DOH	251746.90N 0513519.94E
<b>DOH 12.3 D (MATF)</b> - RDL186 / 12.30 NM DOH	250247.10N 0513437.49E
<b>GENOT (MAHF)</b> - BRG 065.94° / 14.31 NM DOH	252018.11N 0515114.66E