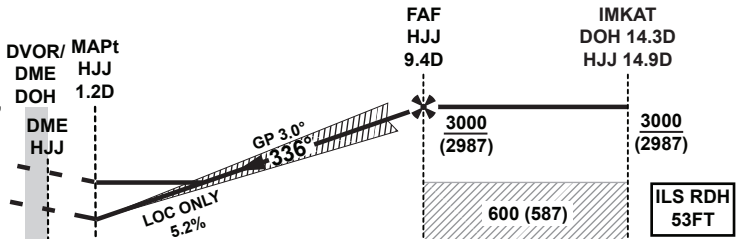


TA 13000

**Missed Approach**  
Climb straight ahead, at HJJ 2.7D (DOH 3.4D), turn left onto track 306° to intercept DOH R321 (do not cross DOH R318) crossing DOH 7.5D at or above 2500. At DOH 12.3D turn right to intercept the DOH 14.3D arc, at 5000, proceeding clockwise to GENOT and hold. Climb and maintain 5000. Missed Approach speed restriction 230KIAS.



THR ELEV 13

DME HJJ	0	1	2	3	4	5	6	7	8	9	10	11	12	13	14	15	NM
DME	1	2	3	4	5	6	7	8	9								
ALT (5.2%)	340	660	980	1290	1610	1930	2250	2570	2880								

OCA (OCH)		A	B	C	D	DA (DH)	A	B	C	D
Straight in Approach	ILS CAT I 2.5%	301 (288)	310 (297)	320 (307)	330 (317)	ILS CAT II	184 (171)	200 (187)	213 (200)	226 (213)
	ILS CAT I 4.0%	181 (168)	192 (179)	205 (192)	220 (207)	ALS OUT	RVR 450m	RVR 450m	RVR 450m	RVR 450m
	ILS CAT II 2.5%	184 (171)	200 (187)	213 (200)	226 (213)	ILS CAT II	113 (100) / RVR 300m			
	ILS CAT II 4.0%	86 (73)	99 (86)	111 (98)	132 (119)	ALS OUT	RVR 300m* / RVR 350m			
LOC ONLY		340 (327)				ILS CAT IIIA	63 (50) / RVR 200m			
Circling		620 (607)		1240 (1227)		ILS CAT IIIB	RVR 50m			

Note: \* - 300m may be used for CAT D aeroplane conducting autoland.

- HJJ DME zero ranged to TDZ.
- Aircraft to commence initial racetrack at 3000 (2987).
- Revert back to 2.5% climb gradient on passing HJJ 2.7D or DOH 3.4D.
- Racetrack to be used only in the case of communications failure.
- HOLD at GENOT protected for sector 3 Entry only.

LOC only Approach: MAPt at HJJ 1.2D									
Speed	KT	80	100	120	140	160	180		
Time	MIN:SEC	Timing Not Authorized							
Rate of Descent	FT/MIN	420	530	640	740	850	960		

INSTRUMENT  
APPROACH  
CHART-ICAO

DOHA/Hamad Intl.(OTHH)  
ILS RWY 34L  
ACFT CAT A,B,C,D

AERONAUTICAL DATA TABULATION

ILS approach to RWY 34L from IMKAT (IF)	
Fix/Point	Coordinates
IMKAT (IF) - BRG 335.86° / 14.89 NM HJJ	250138.57N 0514220.38E
HJJ 9.4D (FAF) - BRG 335.86° / 9.42 NM HJJ	250644.01N 0514006.28E
Final approach descent angle (LOC Only) - 3.00°	-
HJJ 1.2D (MAPt LOC Only) - BRG 335.86° / 1.20 NM HJJ	251423.40N 0513644.19E
HJJ 2.7D (MATF) - INT TR 335.86° / 2.70 NM HJJ	251801.12N 0513508.26E
DOH 12.3D (MATF) - RDL 321 / 12.30 NM DOH	252452.97N 0512827.67E
GENOT (MAHF) - BRG 065.94° / 14.31 NM DOH	252018.11N 0515114.66E

→

→