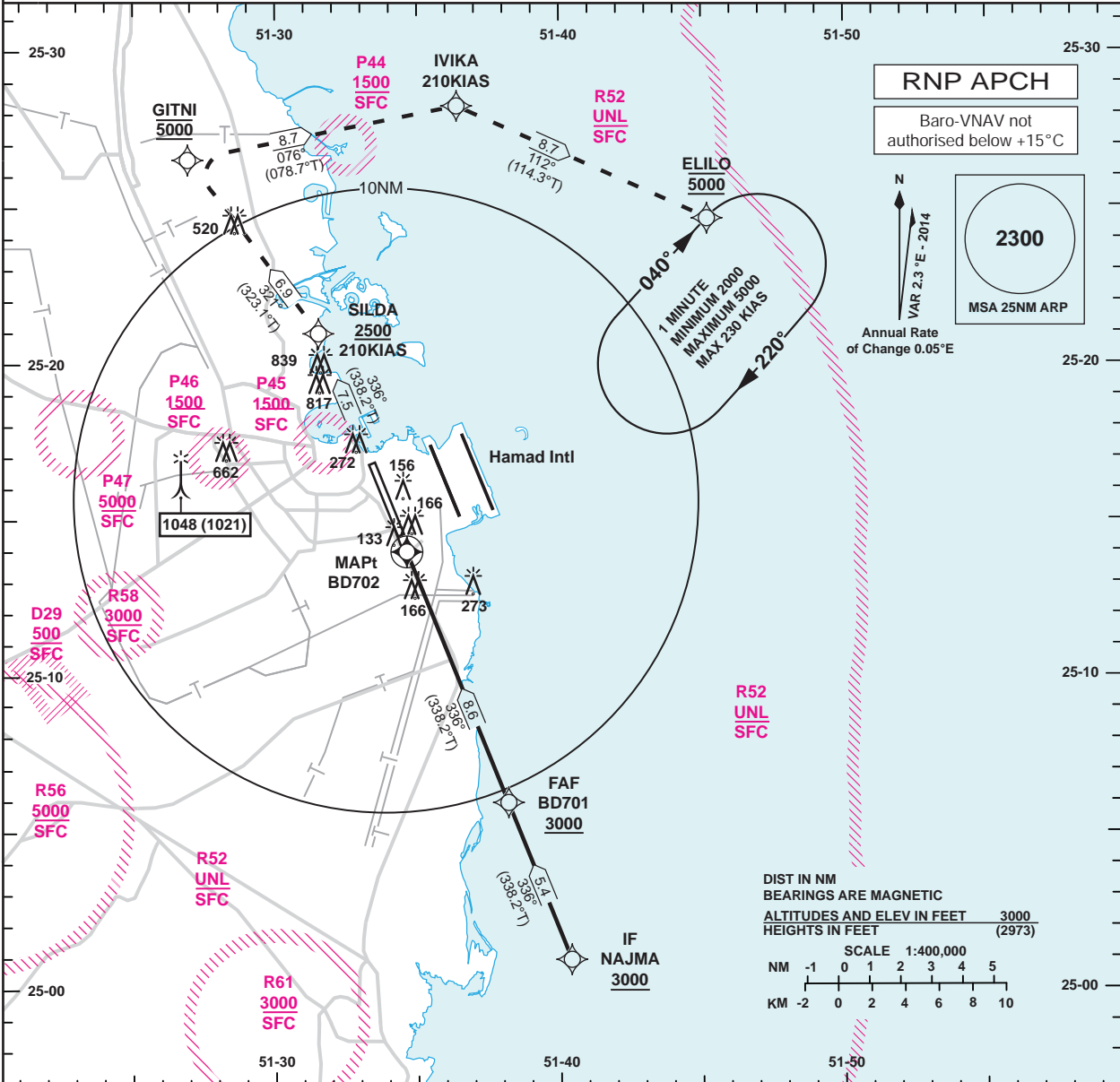


INSTRUMENT APPROACH CHART - ICAO **AD ELEV 37**
HEIGHTS RELATED TO THR RWY 33 - ELEV 27

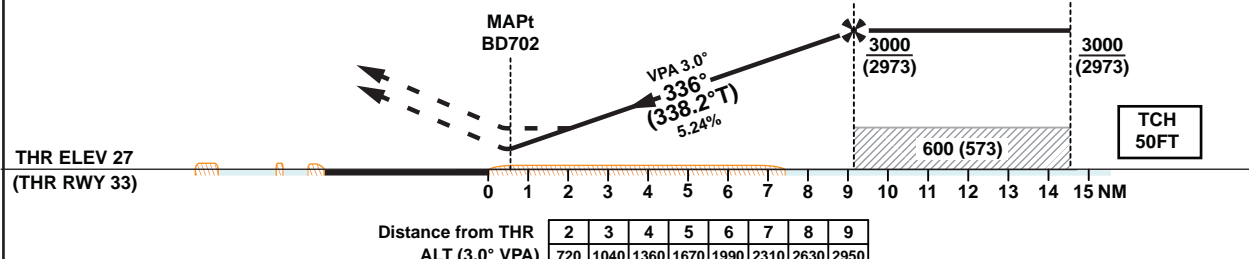
DOHA RADAR	121.10
DOHA APP	119.725 / 120.60
DIRECTOR	119.40 / 121.125
TWR	118.90 / 119.025

DOHA/Doha Intl. (OTBD)
RNP RWY 33
ALL ACFT CATEGORIES



TA 13000

Missed Approach
Climb straight ahead to SILDA, at or above 2500.
At SILDA turn left to GITNI, at 5000. At GITNI turn right to IVIKA, at IVIKA turn right to ELILO and hold.
Missed Approach speed restriction 210KIAS until ELILO.



OCA (OCH)		A	B	C	D	E
Straight in Approach	LNAV/VNAV	390 (363)				
	LNAV	420 (393)				
Circling		620 (583)	850 (813)	1240 (1203)		1550 (1513)

1. Hold at ELILO protected for Sector 3 Entry only.
2. 5.8% CG required to SILDA.

Approach: MAPt at BD702							
Speed	KT	80	100	120	140	160	180
Time	MIN:SEC	Timing Not Authorized					
Rate of descent	FT/MIN	420	530	630	740	840	950

Changes: Editorial correction - symbology for exceptionally high obstacle (lighted).

**INSTRUMENT
 APPROACH
 CHART-ICAO**

**AD ELEV 37
 HEIGHTS RELATED
 TO THR RWY 33 - ELEV 27**

**DOHA/Doha Intl.(OTBD)
 RNP RWY 33
 ALL ACFT CATEGORIES**

TABULAR DESCRIPTION

RNP RWY 33											
Serial Num	Path Descriptor	Waypoint Identifier	Fly-over	Course °M(°T)	Magnetic Variation(°)	Distance (NM)	Turn Direction	Altitude (ft)	Speed (kt)	VPA(°)/TCH(ft)	Navigation Specification
1	IF	NAJMA	-	-	2.3	-	-	+3000	-	-	RNP APCH
2	TF	BD701	-	336 (338.2)	2.3	5.4	-	+3000	-	-	RNP APCH
3	TF	BD702	Y	336 (338.2)	2.3	8.6	-	-	-	-3.0/50	RNP APCH
4	CF	SILDA	-	336 (338.2)	2.3	-	-	+2500	-210	-	RNP APCH
5	TF	GITNI	-	321 (323.1)	2.3	6.9	R	@5000	-210	-	RNP APCH
6	TF	IVIKA	-	076 (078.7)	2.3	8.7	-	-	-210	-	RNP APCH
7	TF	ELILO	-	112 (114.3)	2.3	8.7	-	@5000	-230	-	RNP APCH
8	HM	ELILO	Y	040 (042.2)	2.3	4.3	R	@5000	-230	-	RNP APCH

WAYPOINT LIST

RNP RWY 33	
Waypoint Identifier	Coordinates
NAJMA	250057.64N 0514022.44E
BD701	250558.04N 0513810.48E
BD702	251401.07N 0513437.82E
SILDA	252100.22N 0513132.97E
GITNI	252633.64N 0512657.57E
IVIKA	252816.47N 0513625.72E
ELILO	252439.52N 0514513.38E