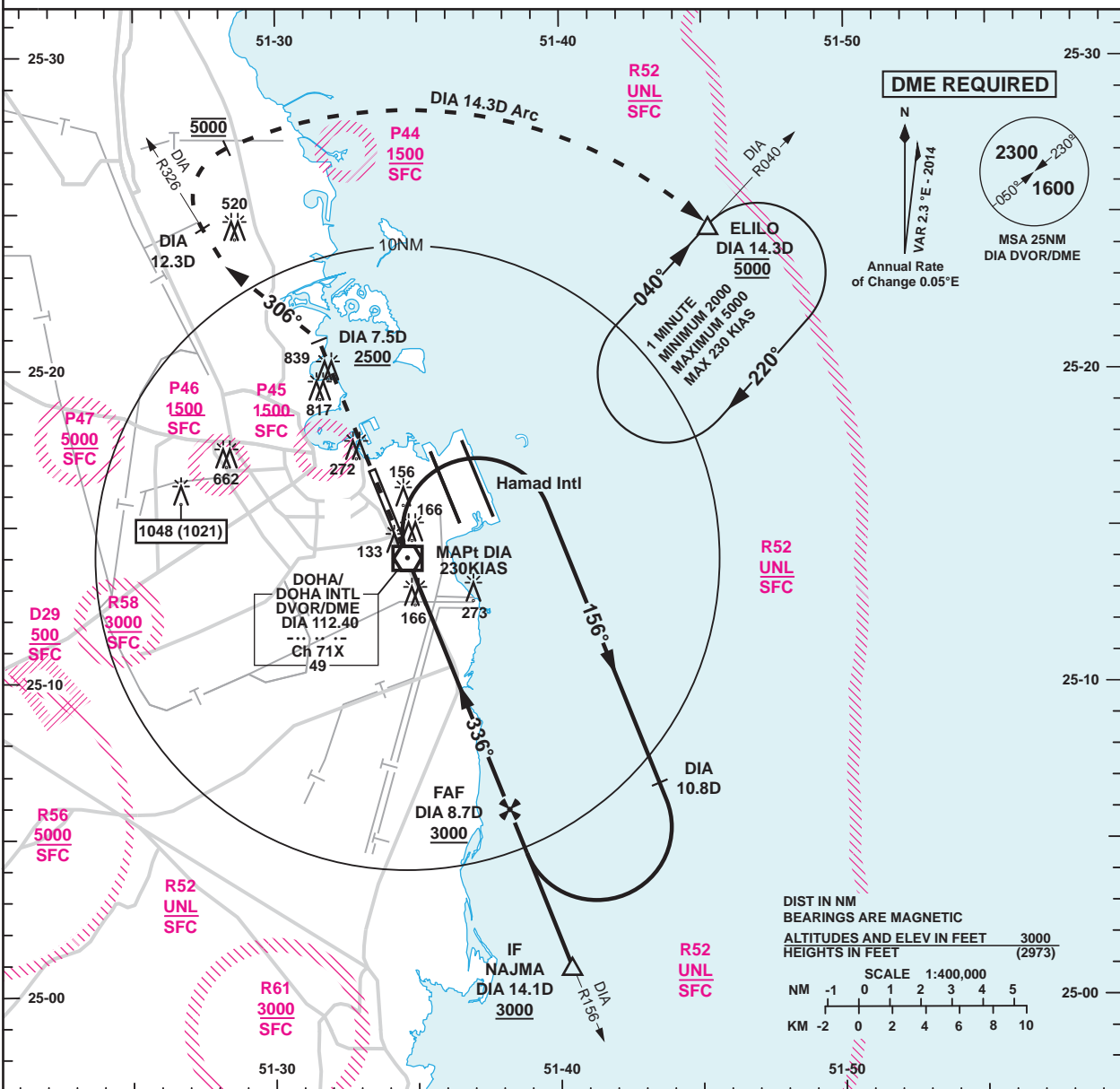


INSTRUMENT APPROACH CHART - ICAO **AD ELEV 37**
HEIGHTS RELATED TO THR RWY 33 - ELEV 27

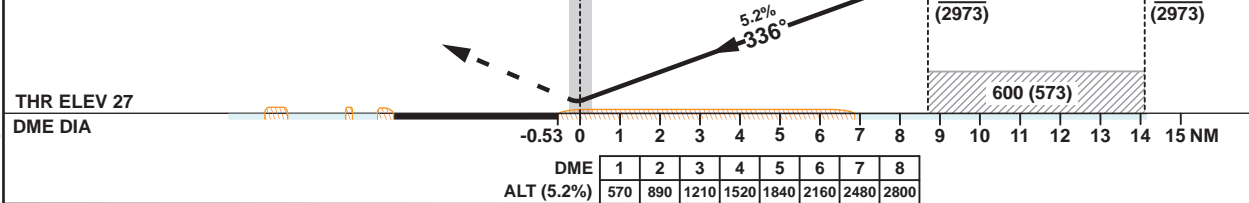
DOHA RADAR	121.10
DOHA APP	119.725 / 120.60
DIRECTOR	119.40 / 121.125
TWR	118.90 / 119.025

DOHA/Doha Intl. (OTBD)
VOR z RWY 33
ALL ACFT CATEGORIES



TA 13000

Missed Approach
Climb straight ahead to DIA 7.5D, at or above 2500.
Turn left onto track 306° to intercept DIA R326.
At DIA 12.3D turn right to intercept the DIA 14.3D arc at 5000 proceeding clockwise to ELILO and hold.
Missed Approach speed restriction 230KIAS.



OCA (OCH)		A	B	C	D	E
Straight in Approach	DVOR/DME	420 (393)				
	Circling	620 (583)	850 (813)	1240 (1203)		1550 (1513)

1. Hold at ELILO protected for Sector 3 Entry only.
2. Racetrack to be used only in case of communications failure.
3. Aircraft to commence Initial Racetrack at 3000 (2973).

VOR APPROACH: MAPt at DIA							
Speed	KT	80	100	120	140	160	180
Time	MIN:SEC	Timing Not Authorized					
RATE OF DESCENT	FT/MIN	420	530	630	740	840	950

Changes: Updated MSA, dominating obstacle height and Circling Minimas.