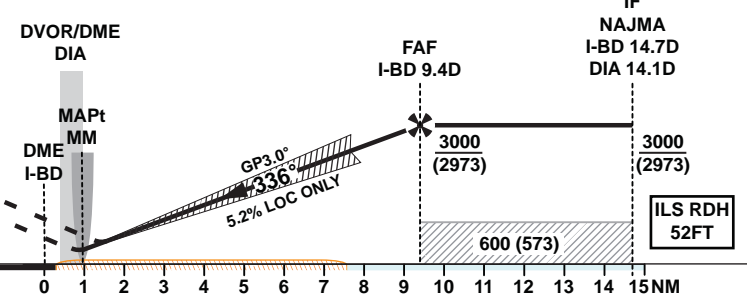


TA 13000

Missed Approach
Climb straight ahead to DIA 7.5D, at or above 2500.
Turn left onto track 306° to intercept DIA R326.
At DIA 12.3D turn right to intercept the DIA 14.3D arc at 5000, proceeding clockwise to ELILO and hold.
Missed Approach speed restriction 230KIAS.



THR ELEV 27
DME IBD

DME ALT (5.2%)	1	2	3	4	5	6	7	8	9
	350	670	990	1310	1620	1940	2260	2580	2900

Straight in Approach	OCA (OCH)	A	B	C	D	E	DA (DH)	A	B	C	D	E
	ILS CAT I	233 (206)	243 (216)	255 (228)	266 (239)	314 (287)	ILS CAT II ALS OUT	147 (120) RVR 300m	160 (133) RVR 400m	171 (144) RVR 450m	185 (158) RVR 450m	245 (218) RVR 450m
	ILS CAT II	147 (120)	160 (133)	171 (144)	185 (158)	245 (218)	77 (50) / RVR 200m					
	LOC ONLY	420 (393)					RVR 50m					
Circling	620 (583)	850 (813)	1240 (1203)		1550 (1513)							

1. I-BD DME Zero Ranged to TDZ.
2. Hold at ELILO protected for Sector 3 Entry only.
3. Racetrack to be used only in case of communications failure.
4. Aircraft to commence Initial Racetrack at 3000 (2973).

LOC ONLY APPROACH : MAPt at MM							
Speed	KT	80	100	120	140	160	180
Time	MIN:SEC	Timing Not Authorized					
RATE OF DESCENT	FT/MIN	420	530	630	740	840	950