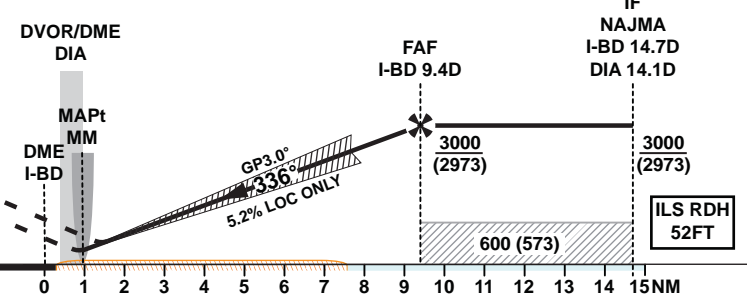


TA 13000

**Missed Approach**  
Climb straight ahead to DIA 7.5D, at or above 2500.  
Turn left onto track 306° to intercept DIA R326.  
At DIA 12.3D turn right to intercept the DIA 14.3D arc at 5000, proceeding clockwise to ELILO and hold.  
Missed Approach speed restriction 230KIAS.



THR ELEV 27  
DME IBD

DME	1	2	3	4	5	6	7	8	9
ALT (5.2%)	350	670	990	1310	1620	1940	2260	2580	2900

OCA (OCH)		A	B	C	D	E	DA (DH)		A	B	C	D	E
		233 (206)	243 (216)	255 (228)	266 (239)	314 (287)			147 (120)	160 (133)	171 (144)	185 (158)	245 (218)
Straight in Approach	ILS CAT I	233 (206)	243 (216)	255 (228)	266 (239)	314 (287)	ILS CAT II	147 (120)	160 (133)	171 (144)	185 (158)	245 (218)	
	ILS CAT II	147 (120)	160 (133)	171 (144)	185 (158)	245 (218)	ALS OUT	RVR 300m	RVR 400m	RVR 450m	RVR 450m	RVR 450m	
Circling	LOC ONLY	420 (393)					77 (50) / RVR 200m						
		620 (583)	850 (813)	1240 (1203)	1550 (1513)	RVR 50m							

1. I-BD DME Zero Ranged to TDZ.
2. Hold at ELILO protected for Sector 3 Entry only.
3. Racetrack to be used only in case of communications failure.
4. Aircraft to commence Initial Racetrack at 3000 (2973).

LOC ONLY APPROACH : MAPt at MM												
Speed	KT	80	100	120	140	160	180					
Time	MIN:SEC	Timing Not Authorized										
RATE OF DESCENT	FT/MIN	420	530	630	740	840	950					

Changes: Updated MSA, dominating obstacle height and Circling Minimas.