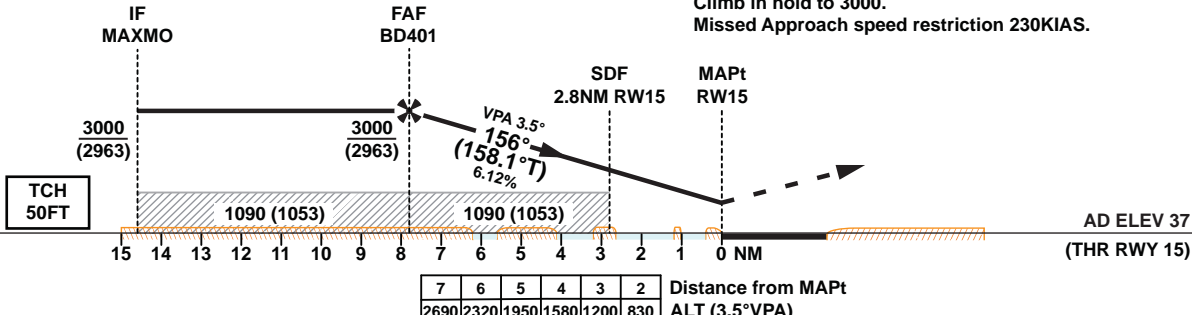


TA 13000

**Missed Approach**  
Climb straight ahead, then turn right to intercept course 186° (188.2°T) to DEKMI. At DEKMI turn left to BUBOG, then left to REVAT and hold. Climb and maintain 2000. Climb in hold to 3000.  
Missed Approach speed restriction 230KIAS.



<b>OCA (OCH)</b>		<b>A</b>	<b>B</b>	<b>C</b>	<b>D</b>	<b>E</b>
<b>Straight in Approach</b>	<b>LNAV</b>	<b>520 (483)</b>				
	<b>Circling</b>	<b>620 (583)</b>	<b>850 (813)</b>	<b>1240 (1203)</b>		<b>1550 (1513)</b>
<b>1. Hold at REVAT protected for Sector 3 Entry only.</b>						
<b>Approach: MAPt at RW15</b>						
<b>Speed</b>	<b>KT</b>	80	100	120	140	160 180
<b>Time</b>	<b>MIN:SEC</b>	Timing Not Authorized				
<b>RATE OF DESCENT</b>	<b>FT/MIN</b>	490	610	740	860	990 1110

Changes: Designated point MAKIN renamed to MAXMO. Designated point BOTAS renamed to DEKMI.

**INSTRUMENT  
APPROACH  
CHART-ICAO**

**AD ELEV 37  
HEIGHTS RELATED TO AD ELEV**

**DOHA/Doha Intl.(OTBD)  
RNP RWY 15 (LNAV only)  
ALL ACFT CATEGORIES**

**TABULAR DESCRIPTION**

**RNP RWY 15 (LNAV Only)**

Serial Num	Path Descriptor	Waypoint Identifier	Fly-over	Course °M(°T)	Magnetic Variation(°)	Distance (NM)	Turn Direction	Altitude (ft)	Speed (kt)	VPA(°)/TCH(ft)	Navigation Specification
1	IF	MAXMO	-	-	2.3	-	-	+3000	-	-	RNP APCH
2	TF	BD401	-	156 (158.1)	2.3	6.8	-	+3000	-	-	RNP APCH
3	TF	RW15	Y	156 (158.1)	2.3	7.8	-	-	-	-3.5/50	RNP APCH
4	CF	DEKMI	-	186 (188.2)	2.3	-	L	-	-230	-	RNP APCH
5	TF	BUBOG	-	076 (078.1)	2.3	9.6	-	-	-230	-	RNP APCH
6	TF	REVAT	-	034 (036.7)	2.3	10.3	-	@2000	-230	-	RNP APCH
7	HM	REVAT	Y	103 (105.2)	2.3	4.3	L	@3000	-230	-	RNP APCH

**WAYPOINT LIST**

**RNP RWY 15 (LNAV Only)**

Waypoint Identifier	Coordinates
MAXMO	253003.10N 0512732.91E
BD401	252344.28N 0513020.49E
RW15	251626.13N 0513333.92E
DEKMI	250006.66N 0513226.55E
BUBOG	250204.78N 0514245.93E
REVAT	251020.75N 0514932.10E