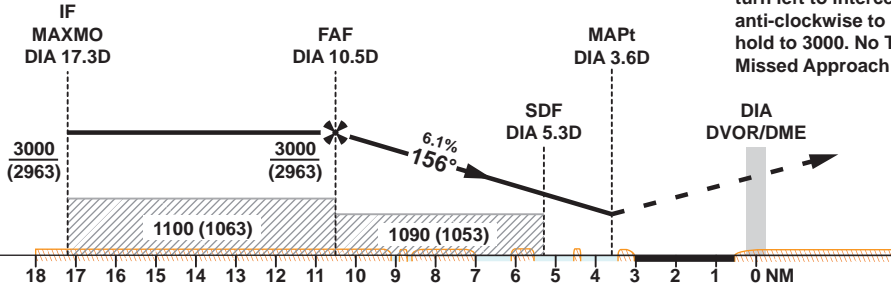


Missed Approach
Climb straight ahead to DIA, turn right onto R186 climbing to 2000. At DIA 12.0D, turn left to intercept DIA 14.0D arc anti-clockwise to REVAT and hold. Climb in hold to 3000. No Turns Prior to MAPt.
Missed Approach speed restriction 230KIAS.



10	9	8	7	6	5	4	DME
2840	2470	2100	1730	1350	980	610	ALT (6.1%)

OCA (OCH)		A	B	C	D	E
Straight in Approach	DVOR/DME	540 (503)				
Circling		620 (583)	850 (813)	1240 (1203)		1550 (1513)

1. Hold at REVAT protected for Sector 3 Entry only.
2. Racetrack to be used only in case of communications failure.
3. Aircraft to commence Initial Racetrack at 3000 (2963).

VOR Approach: MAPt at DIA 3.6D

Speed	KT	80	100	120	140	160	180
Time	MIN:SEC	Timing Not Authorized					
RATE OF DESCENT	FT/MIN	490	610	740	860	990	1110