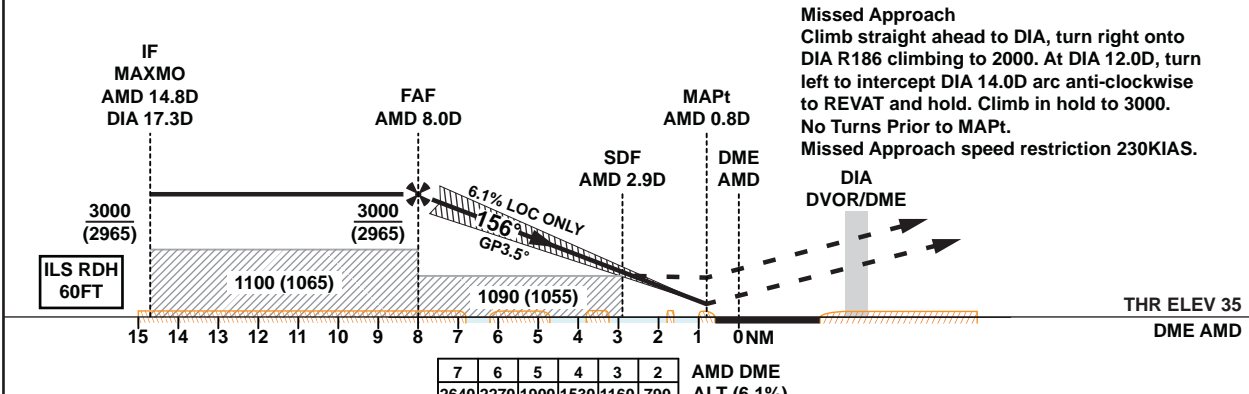


TA 13000



		7 6 5 4 3 2		AMD DME ALT (6.1%)			
		2640 2270 1900 1530 1160 790					
<b>OCA (OCH)</b>		<b>A</b>	<b>B</b>	<b>C</b>	<b>D</b>	<b>E</b>	
Straight in Approach	ILS	245 (210)	254 (219)	263 (228)	272 (237)	322 (287)	
	LOC ONLY	520 (485)					
<b>Circling</b>		<b>620 (583)</b>	<b>850 (813)</b>	<b>1240 (1203)</b>		<b>1550 (1513)</b>	

1. AMD DME Zero Ranged to TDZ.
2. Hold at REVAT protected for Sector 3 Entry only.
3. Racetrack to be used only in case of communication failure.
4. Aircraft to commence Initial Racetrack at 3000 (2965).

**LOC ONLY Approach: MAPt at AMD 0.8D**

Speed	KT	80	100	120	140	160	180
Time	MIN:SEC	Timing Not Authorized					
RATE OF DESCENT	FT/MIN	490	610	740	860	990	1110

Changes: Designated point MAKIN renamed to MAXMO.