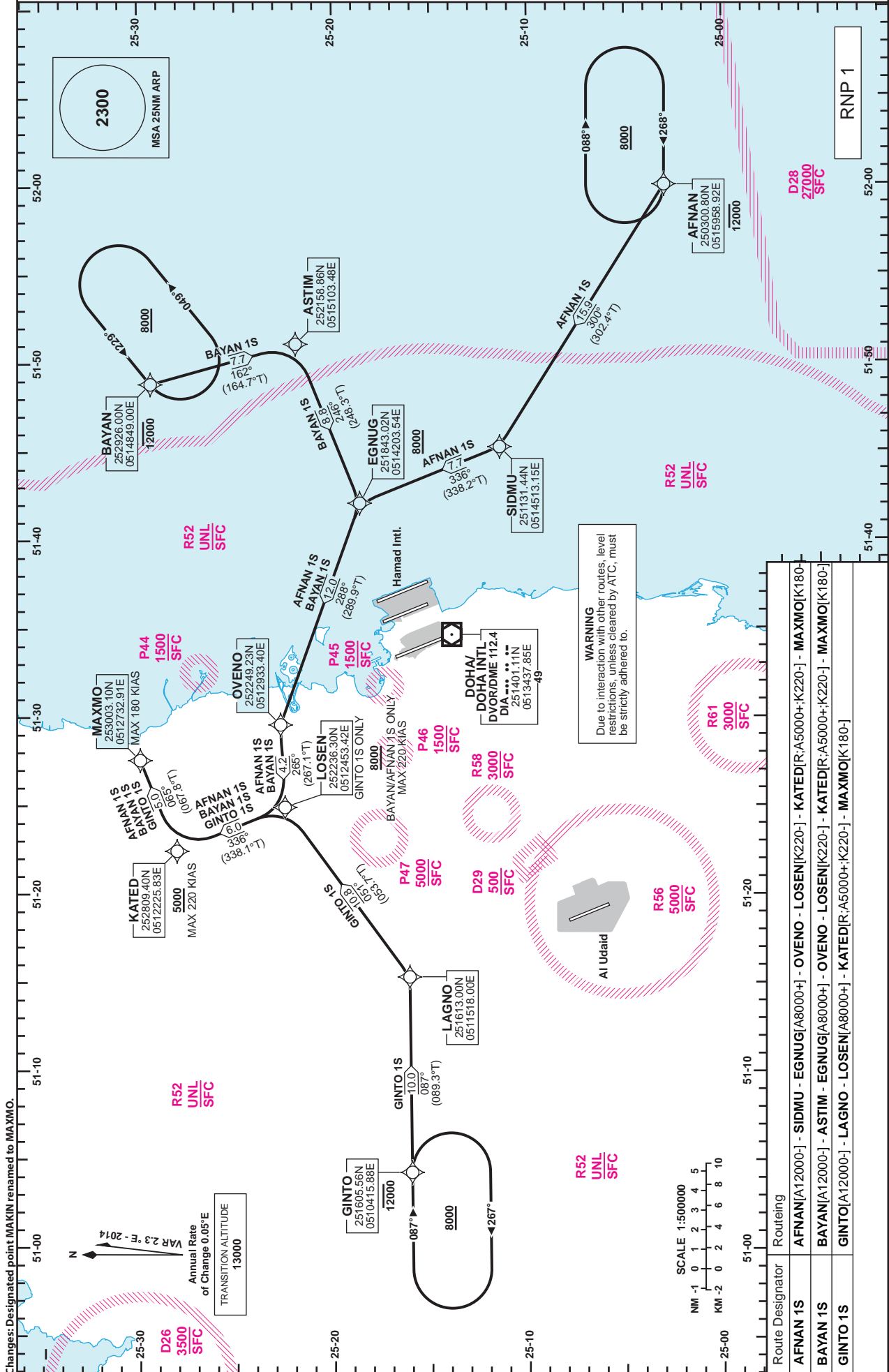


**STANDARD ARRIVAL
CHART - INSTRUMENT
(STAR) - ICAO**

DIST IN NM
BEARINGS ARE MAGNETIC
ALTITUDES AND ELEV IN FEET

DOHA RADAR 121.10
DOHA APP 119.725 / 120.60
DIRECTOR 119.40 / 121.125
TWR 118.90 / 119.025

**DOHA/Doha Intl. (OTBD)
RNP RWY 15
AFNAN 1S /BAYAN 1S /GINTO 1S**



STANDARD ARRIVAL
CHART - INSTRUMENT
(STAR) - ICAO

DOHA/Doha Intl.(OTBD)
RNP RWY 15
AFNAN 1S /BAYAN 1S /GINTO 1S

TABULAR DESCRIPTION

RNP STAR AFNAN 1S

Serial Num	Path Descriptor	Waypoint Identifier	Fly-over	Course °M(°T)	Magnetic Variation(°)	Distance (NM)	Turn Direction	Altitude (ft)	Speed (kt)	VPA(°)/TCH(ft)	Navigation Specification
1	IF	AFNAN	-	-	2.3	-	-	-12000	-	-	RNP 1
2	TF	SIDMU	-	300 (302.4)	2.3	15.9	-	-	-	-	RNP 1
3	TF	EGNUG	-	336 (338.2)	2.3	7.7	-	+8000	-	-	RNP 1
4	TF	OVENO	-	288 (289.9)	2.3	12.0	-	-	-	-	RNP 1
5	TF	LOSEN	-	265 (267.1)	2.3	4.2	-	-	-220	-	RNP 1
6	TF	KATED	-	336 (338.1)	2.3	6.0	R	+5000	-220	-	RNP 1
7	TF	MAXMO	-	065 (067.8)	2.3	5.0	-	-	-180	-	RNP 1

RNP STAR BAYAN 1S

Serial Num	Path Descriptor	Waypoint Identifier	Fly-over	Course °M(°T)	Magnetic Variation(°)	Distance (NM)	Turn Direction	Altitude (ft)	Speed (kt)	VPA(°)/TCH(ft)	Navigation Specification
1	IF	BAYAN	-	-	2.3	-	-	-12000	-	-	RNP 1
2	TF	ASTIM	-	162 (164.7)	2.3	7.7	-	-	-	-	RNP 1
3	TF	EGNUG	-	246 (248.3)	2.3	8.8	-	+8000	-	-	RNP 1
4	TF	OVENO	-	288 (289.9)	2.3	12.0	-	-	-	-	RNP 1
5	TF	LOSEN	-	265 (267.1)	2.3	4.2	-	-	-220	-	RNP 1
6	TF	KATED	-	336 (338.1)	2.3	6.0	R	+5000	-220	-	RNP 1
7	TF	MAXMO	-	065 (067.8)	2.3	5.0	-	-	-180	-	RNP 1

RNP STAR GINTO 1S

Serial Num	Path Descriptor	Waypoint Identifier	Fly-over	Course °M(°T)	Magnetic Variation(°)	Distance (NM)	Turn Direction	Altitude (ft)	Speed (kt)	VPA(°)/TCH(ft)	Navigation Specification
1	IF	GINTO	-	-	2.3	-	-	-12000	-	-	RNP 1
2	TF	LAGNO	-	087 (089.3)	2.3	10.0	-	-	-	-	RNP 1
3	TF	LOSEN	-	051 (053.7)	2.3	10.8	-	+8000	-	-	RNP 1
4	TF	KATED	-	336 (338.1)	2.3	6.0	R	+5000	-220	-	RNP 1
5	TF	MAXMO	-	065 (067.8)	2.3	5.0	-	-	-180	-	RNP 1

WAYPOINT LIST

RNP STAR AFNAN 1S/BAYAN 1S/GINTO 1S

Waypoint Identifier	Coordinates
AFNAN	250300.80N 0515958.92E
SIDMU	251131.44N 0514513.15E
BAYAN	252926.00N 0514849.00E
ASTIM	252158.86N 0515103.48E
EGNUG	251843.02N 0514203.54E
OVENO	252249.23N 0512933.40E
GINTO	251605.56N 0510415.88E
LAGNO	251613.00N 0511518.00E
LOSEN	252236.30N 0512453.42E
KATED	252809.40N 0512225.83E
MAXMO	253003.10N 0512732.91E