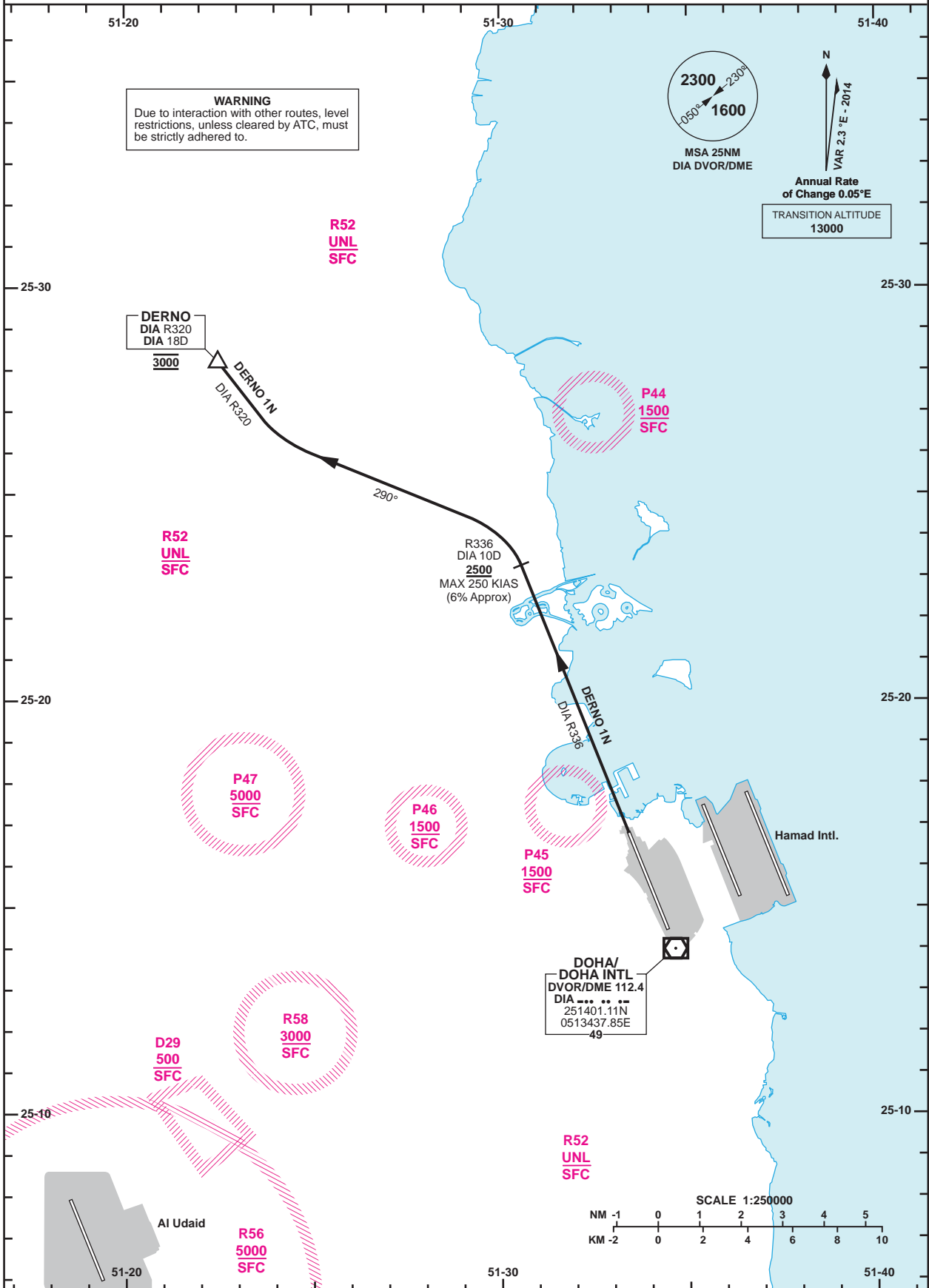


**STANDARD DEPARTURE  
CHART - INSTRUMENT  
(SID) - ICAO**

DIST IN NM  
BEARINGS ARE MAGNETIC  
ALTITUDES AND ELEV IN FEET

DOHA RADAR 121.10  
DOHA APP 119.725 / 120.60  
TWR 118.90 / 119.025

**DOHA/Doha Intl. (OTBD)  
RWY 33  
DERNO 1N**



Route Designator	Routeing
<b>DERNO 1N</b>	Climb on <b>DIA R336</b> to <b>DIA 10D</b> , crossing <b>DIA 10D</b> at or above <b>2500</b> . Turn left heading <b>290°</b> to intercept <b>DIA R320</b> to <b>DERNO (DIA 18D)</b> at <b>3000</b> . Continue as directed.

GENERAL INFORMATION : 1. Close-in obstacles exist. 2. **9.0% CG** required to **1000**.

RWY	Primary SIDs	Initial Contact	Initial Altitude	Radio Fail Procedures
33	<b>DERNO 1N</b>	DEPs	3000	Execute three left-hand orbits at DERNO at 3000. Continue left-hand orbit climbing to 5000. Proceed direct to first enroute waypoint then continue as flight planned or proceed direct to DIA DVOR and follow the ILS 33 approach procedure to land at OTBD.

Changes: Updated MSA.