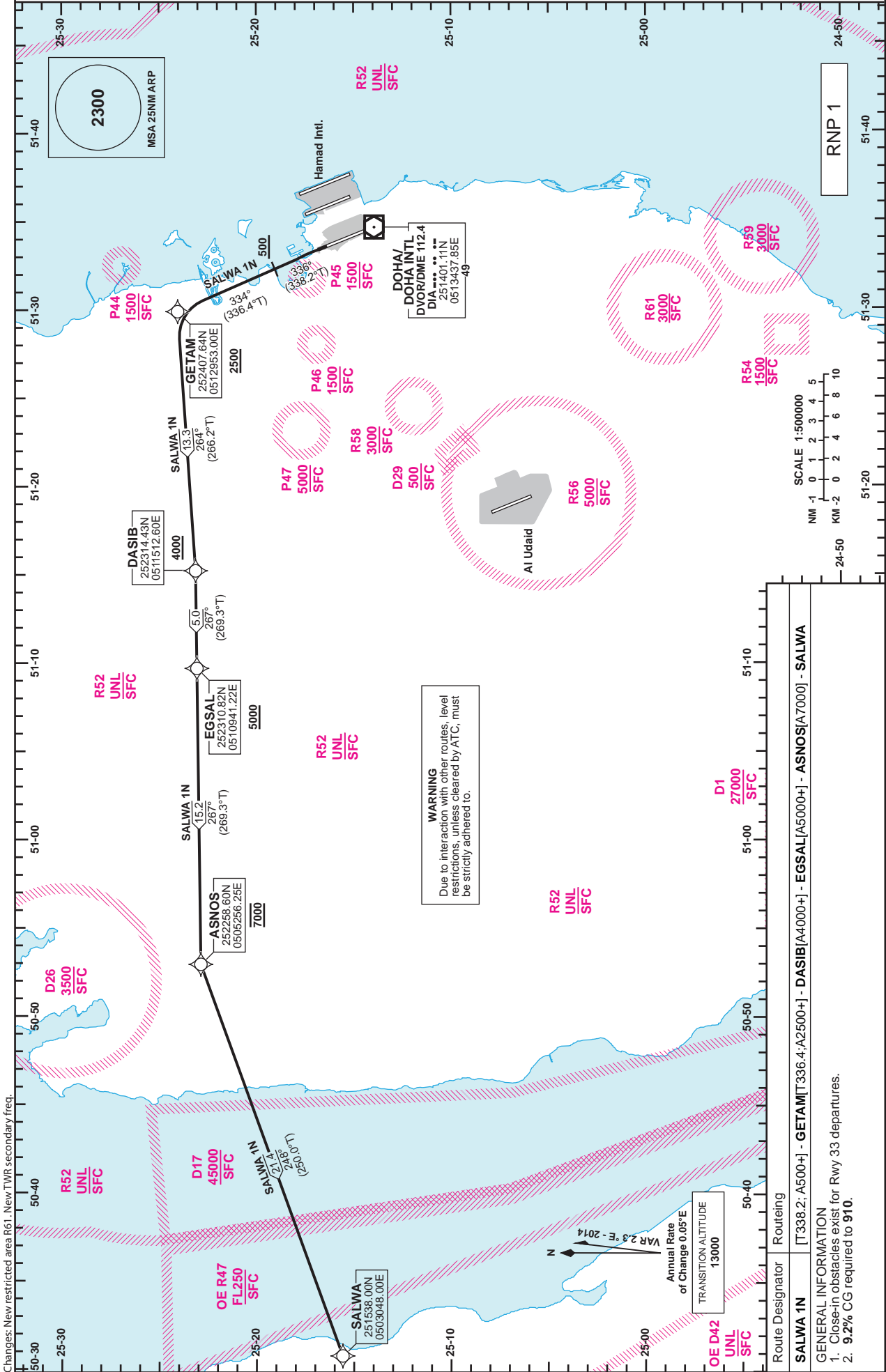


**STANDARD DEPARTURE  
CHART - INSTRUMENT  
(SID) - ICAO**

DIST IN NM  
BEARINGS ARE MAGNETIC  
ALTITUDES AND ELEV IN FEET

DOHA RADAR 121.10  
DOHA APP 119.725 / 120.60  
TWR 118.90 / 119.025

**DOHA/Doha Intl. (OTBD)  
RNP RWY 33  
SALWA 1N**



Changes: New restricted area R61. New TWR secondary freq.

**WARNING**  
Due to interaction with other routes, level restrictions, unless cleared by ATC, must be strictly adhered to.

Route Designator	SALWA 1N
Routing	[T338.2; A5000+] - GETAM[T336.4; A2500+] - DASIB[A4000+] - EGSAL[A5000+] - ASNOS[A7000] - SALWA
GENERAL INFORMATION	1. Close-in obstacles exist for Rwy 33 departures. 2. 9.2% CG required to 910.

STANDARD DEPARTURE  
 CHART - INSTRUMENT  
 (SID) - ICAO

DOHA/Doha Intl.(OTBD)  
 RNP RWY 33  
 SALWA 1N

**TABULAR DESCRIPTION**

RNP SID SALWA 1N											
Serial Num	Path Descriptor	Waypoint Identifier	Fly-over	Course °M(°T)	Magnetic Variation(°)	Distance (NM)	Turn Direction	Altitude (ft)	Speed (kt)	VPA(°)/TCH(ft)	Navigation Specification
1	CA	-	-	336 (338.2)	2.3	-	-	+500	-	-	RNP 1
2	CF	GETAM	-	334 (336.4)	2.3	-	-	+2500	-	-	RNP 1
3	TF	DASIB	-	264 (266.2)	2.3	13.3	-	+4000	-	-	RNP 1
4	TF	EGSAL	-	267 (269.3)	2.3	5.0	-	+5000	-	-	RNP 1
5	TF	ASNOS	-	267 (269.3)	2.3	15.2	-	@7000	-	-	RNP 1
6	TF	SALWA	-	248 (250.0)	2.3	21.4	-	-	-	-	RNP 1

**WAYPOINT LIST**

RNP SID SALWA 1N	
Waypoint Identifier	Coordinates
GETAM	252407.64N 0512953.00E
DASIB	252314.43N 0511512.60E
EGSAL	252310.82N 0510941.22E
ASNOS	252258.60N 0505256.25E
SALWA	251538.00N 0503048.00E