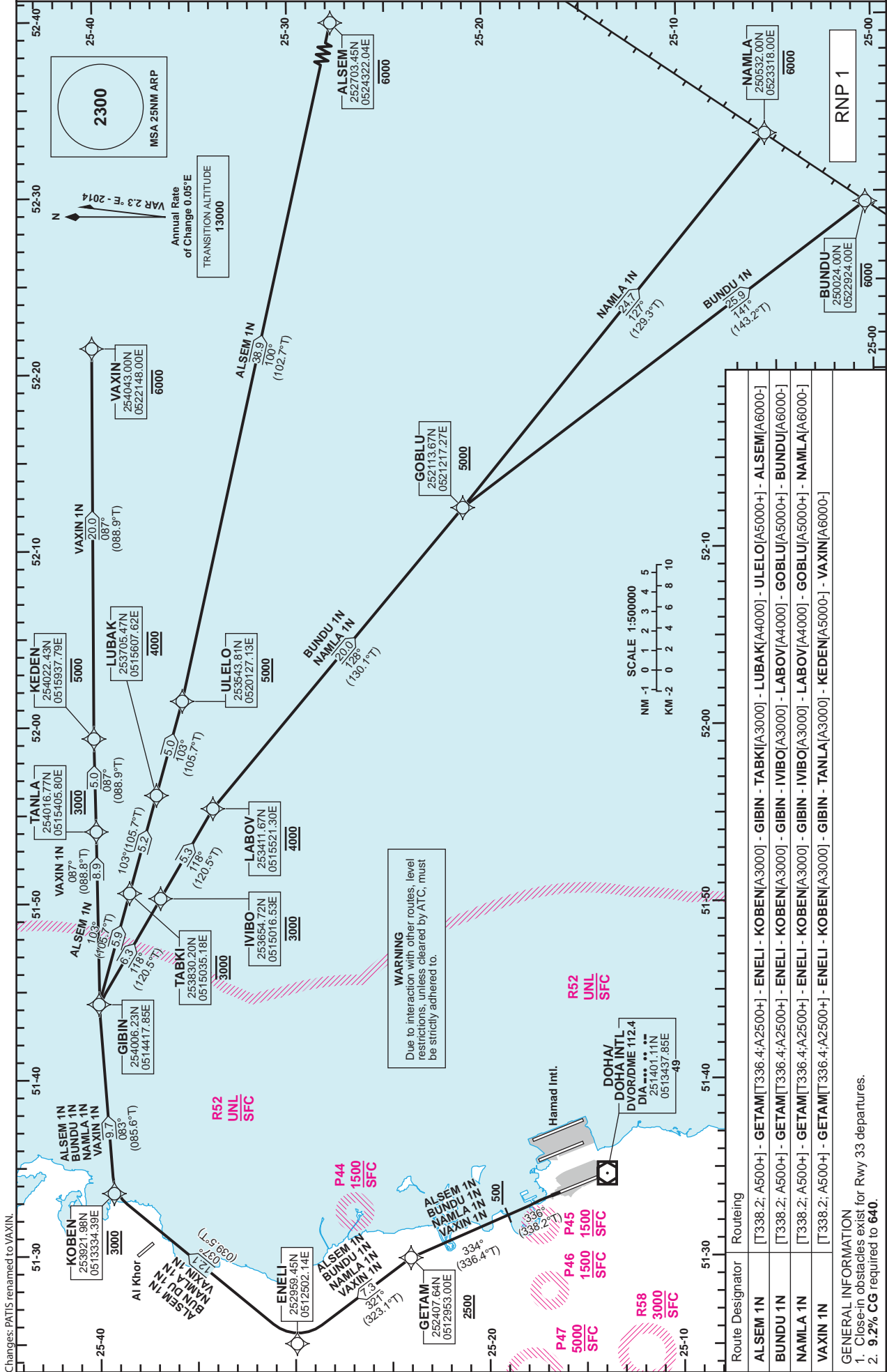


**STANDARD DEPARTURE CHART - INSTRUMENT (SID) - ICAO**

DIST IN NM  
BEARINGS ARE MAGNETIC  
ALTITUDES AND ELEV IN FEET

DOHA RADAR 121.10  
DOHA APP 119.725 / 120.60  
TWR 118.90 / 119.025

**DOHA/Doha Intl. (OTBD)**  
**RNP RWY 33**  
**ALSEM 1N / BUNDU 1N / NAMLA 1N / VAXIN 1N**



**WARNING**  
Due to interaction with other routes, level restrictions, unless cleared by ATC, must be strictly adhered to.

Route Designator	Routing
ALSEM 1N	[T336.2; A500+] - GETAM [T336.4; A2500+] - ENELI - KOBEN [A3000] - GIBIN - TABKI [A3000] - ULELO [A4000] - LUBAK [A4000] - ALSEM [A6000+]
BUNDU 1N	[T338.2; A500+] - GETAM [T336.4; A2500+] - ENELI - KOBEN [A3000] - GIBIN - IVIBO [A3000] - LABOV [A4000] - GOBLU [A5000+] - BUNDU [A6000+]
NAMLA 1N	[T338.2; A500+] - GETAM [T336.4; A2500+] - ENELI - KOBEN [A3000] - GIBIN - IVIBO [A3000] - LABOV [A4000] - GOBLU [A5000+] - NAMLA [A6000+]
VAXIN 1N	[T338.2; A500+] - GETAM [T336.4; A2500+] - ENELI - KOBEN [A3000] - GIBIN - TANLA [A3000] - KEDEN [A5000+] - VAXIN [A6000+]

GENERAL INFORMATION  
1. Close-in obstacles exist for Rwy 33 departures.  
2. 9.2% CG required to 640.

Changes: PATIS renamed to VAXIN.

STANDARD DEPARTURE  
CHART - INSTRUMENT  
→ (SID) - ICAO

DOHA/Doha Intl.(OTBD)  
RNP RWY 33  
ALSEM 1N /BUNDU 1N /NAMLA 1N /VAXIN 1N

TABULAR DESCRIPTION

RNP SID ALSEM 1N											
Serial Num	Path Descriptor	Waypoint Identifier	Fly-over	Course °M(°T)	Magnetic Variation(°)	Distance (NM)	Turn Direction	Altitude (ft)	Speed (kt)	VPA(°)/TCH(ft)	Navigation Specification
1	CA	-	-	336 (338.2)	2.3	-	-	+500	-	-	RNP 1
2	CF	GETAM	-	334 (336.4)	2.3	-	-	+2500	-	-	RNP 1
3	TF	ENELI	-	321 (323.1)	2.3	7.3	-	-	-	-	RNP 1
4	TF	KOBEN	-	037 (039.5)	2.3	12.1	-	@3000	-	-	RNP 1
5	TF	GIBIN	-	083 (085.6)	2.3	9.7	-	-	-	-	RNP 1
6	TF	TABKI	-	103 (105.7)	2.3	5.9	-	@3000	-	-	RNP 1
7	TF	LUBAK	-	103 (105.7)	2.3	5.2	-	@4000	-	-	RNP 1
8	TF	ULELO	-	103 (105.7)	2.3	5.0	-	+5000	-	-	RNP 1
9	TF	ALSEM	-	100 (102.7)	2.3	38.9	-	-6000	-	-	RNP 1

RNP SID BUNDU 1N											
Serial Num	Path Descriptor	Waypoint Identifier	Fly-over	Course °M(°T)	Magnetic Variation(°)	Distance (NM)	Turn Direction	Altitude (ft)	Speed (kt)	VPA(°)/TCH(ft)	Navigation Specification
1	CA	-	-	336 (338.2)	2.3	-	-	+500	-	-	RNP 1
2	CF	GETAM	-	334 (336.4)	2.3	-	-	+2500	-	-	RNP 1
3	TF	ENELI	-	321 (323.1)	2.3	7.3	-	-	-	-	RNP 1
4	TF	KOBEN	-	037 (039.5)	2.3	12.1	-	@3000	-	-	RNP 1
5	TF	GIBIN	-	083 (085.6)	2.3	9.7	-	-	-	-	RNP 1
6	TF	IVIBO	-	118 (120.5)	2.3	6.3	-	@3000	-	-	RNP 1
7	TF	LABOV	-	118 (120.5)	2.3	5.3	-	@4000	-	-	RNP 1
8	TF	GOBLU	-	128 (130.1)	2.3	20.0	-	+5000	-	-	RNP 1
9	TF	BUNDU	-	141 (143.2)	2.3	25.9	-	-6000	-	-	RNP 1

RNP SID NAMLA 1N											
Serial Num	Path Descriptor	Waypoint Identifier	Fly-over	Course °M(°T)	Magnetic Variation(°)	Distance (NM)	Turn Direction	Altitude (ft)	Speed (kt)	VPA(°)/TCH(ft)	Navigation Specification
1	CA	-	-	336 (338.2)	2.3	-	-	+500	-	-	RNP 1
2	CF	GETAM	-	334 (336.4)	2.3	-	-	+2500	-	-	RNP 1
3	TF	ENELI	-	321 (323.1)	2.3	7.3	-	-	-	-	RNP 1
4	TF	KOBEN	-	037 (039.5)	2.3	12.1	-	@3000	-	-	RNP 1
5	TF	GIBIN	-	083 (085.6)	2.3	9.7	-	-	-	-	RNP 1
6	TF	IVIBO	-	118 (120.5)	2.3	6.3	-	@3000	-	-	RNP 1
7	TF	LABOV	-	118 (120.5)	2.3	5.3	-	@4000	-	-	RNP 1
8	TF	GOBLU	-	128 (130.1)	2.3	20.0	-	+5000	-	-	RNP 1
9	TF	NAMLA	-	127 (129.3)	2.3	24.7	-	-6000	-	-	RNP 1

RNP SID VAXIN 1N											
Serial Num	Path Descriptor	Waypoint Identifier	Fly-over	Course °M(°T)	Magnetic Variation(°)	Distance (NM)	Turn Direction	Altitude (ft)	Speed (kt)	VPA(°)/TCH(ft)	Navigation Specification
1	CA	-	-	336 (338.2)	2.3	-	-	+500	-	-	RNP 1
2	CF	GETAM	-	334 (336.4)	2.3	-	-	+2500	-	-	RNP 1
3	TF	ENELI	-	321 (323.1)	2.3	7.3	-	-	-	-	RNP 1
4	TF	KOBEN	-	037 (039.5)	2.3	12.1	-	@3000	-	-	RNP 1
5	TF	GIBIN	-	083 (085.6)	2.3	9.7	-	-	-	-	RNP 1
6	TF	TANLA	-	087 (088.8)	2.3	8.9	-	@3000	-	-	RNP 1
7	TF	KEDEN	-	087 (088.9)	2.3	5.0	-	-5000	-	-	RNP 1
8	TF	VAXIN	-	087 (088.9)	2.3	20.0	-	-6000	-	-	RNP 1

WAYPOINT LIST

RNP SID ALSEM 1N /BUNDU 1N /NAMLA 1N /VAXIN 1N	
Waypoint Identifier	Coordinates
GETAM	252407.64N 0512953.00E
ENELI	252959.45N 0512502.14E
KOBEN	253921.98N 0513334.39E
GIBIN	254006.23N 0514417.85E
TABKI	253830.20N 0515035.18E
LUBAK	253705.47N 0515607.62E
ULELO	253543.81N 0520127.13E
ALSEM	252703.45N 0524322.04E

RNP SID ALSEM 1N /BUNDU 1N /NAMLA 1N /VAXIN 1N	
Waypoint Identifier	Coordinates
IVIBO	253654.72N 0515016.53E
LABOV	253411.67N 0515521.30E
GOBLU	252113.67N 0521217.27E
BUNDU	250024.00N 0522924.00E
NAMLA	250532.00N 0523318.00E
TANLA	254016.77N 0515405.80E
KEDEN	254022.43N 0515937.79E
VAXIN	254043.00N 0522148.00E