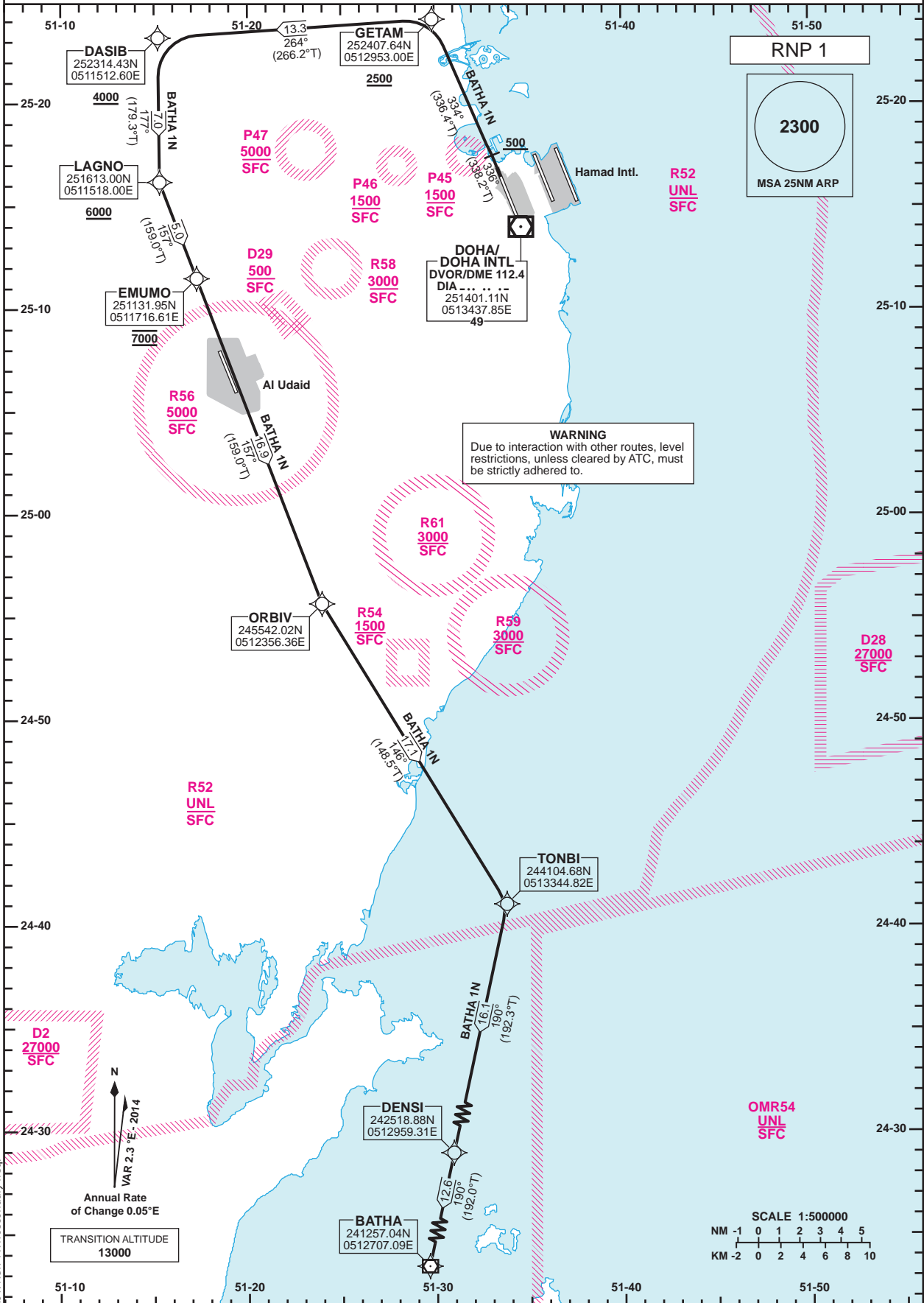


**STANDARD DEPARTURE
CHART - INSTRUMENT
(SID) - ICAO**

DIST IN NM
BEARINGS ARE MAGNETIC
ALTITUDES AND ELEV IN FEET

DOHA RADAR 121.10
DOHA APP 119.725 / 120.60
TWR 118.90 / 119.025

**DOHA/Doha Intl. (OTBD)
RNP RWY 33
BATHA 1N**



Route Designator	Routing
BATHA 1N	[T338.2; A500+] - GETAM[T336.4; A2500+] - DASIB[A4000+] - LAGNO[A6000+] - EMUMO[A7000] - ORBIV - TONBI - DENSI - BATHA

GENERAL INFORMATION
 1. Close-in obstacles exist for Rwy 33 departures.
 2. 9.2% CG required to 910.

Changes: New restricted area B6.1, New TWR secondary freq.

**STANDARD DEPARTURE
 CHART - INSTRUMENT
 (SID) - ICAO**

**DOHA/Doha Intl.(OTBD)
 RNP RWY 33
 BATHA 1N**

TABULAR DESCRIPTION

RNP SID BATHA 1N											
Serial Num	Path Descriptor	Waypoint Identifier	Fly-over	Course °M(°T)	Magnetic Variation(°)	Distance (NM)	Turn Direction	Altitude (ft)	Speed (kt)	VPA(°)/TCH(ft)	Navigation Specification
1	CA	-	-	336 (338.2)	2.3	-	-	+500	-	-	RNP 1
2	CF	GETAM	-	334 (336.4)	2.3	-	-	+2500	-	-	RNP 1
3	TF	DASIB	-	264 (266.2)	2.3	13.3	-	+4000	-	-	RNP 1
4	TF	LAGNO	-	177 (179.3)	2.3	7.0	-	+6000	-	-	RNP 1
5	TF	EMUMO	-	157 (159.0)	2.3	5.0	-	@7000	-	-	RNP 1
6	TF	ORBIV	-	157 (159.0)	2.3	16.9	-	-	-	-	RNP 1
7	TF	TONBI	-	146 (148.5)	2.3	17.1	-	-	-	-	RNP 1
8	TF	DENSI	-	190 (192.3)	2.3	16.1	-	-	-	-	RNP 1
9	TF	BATHA	-	190 (192.0)	2.3	12.6	-	-	-	-	RNP 1

WAYPOINT LIST

RNP SID BATHA 1N	
Waypoint Identifier	Coordinates
GETAM	252407.64N 0512953.00E
DASIB	252314.43N 0511512.60E
LAGNO	251613.00N 0511518.00E
EMUMO	251131.95N 0511716.61E
ORBIV	245542.02N 0512356.36E
TONBI	244104.68N 0513344.82E
DENSI	242518.88N 0512959.31E
BATHA	241257.04N 0512707.09E