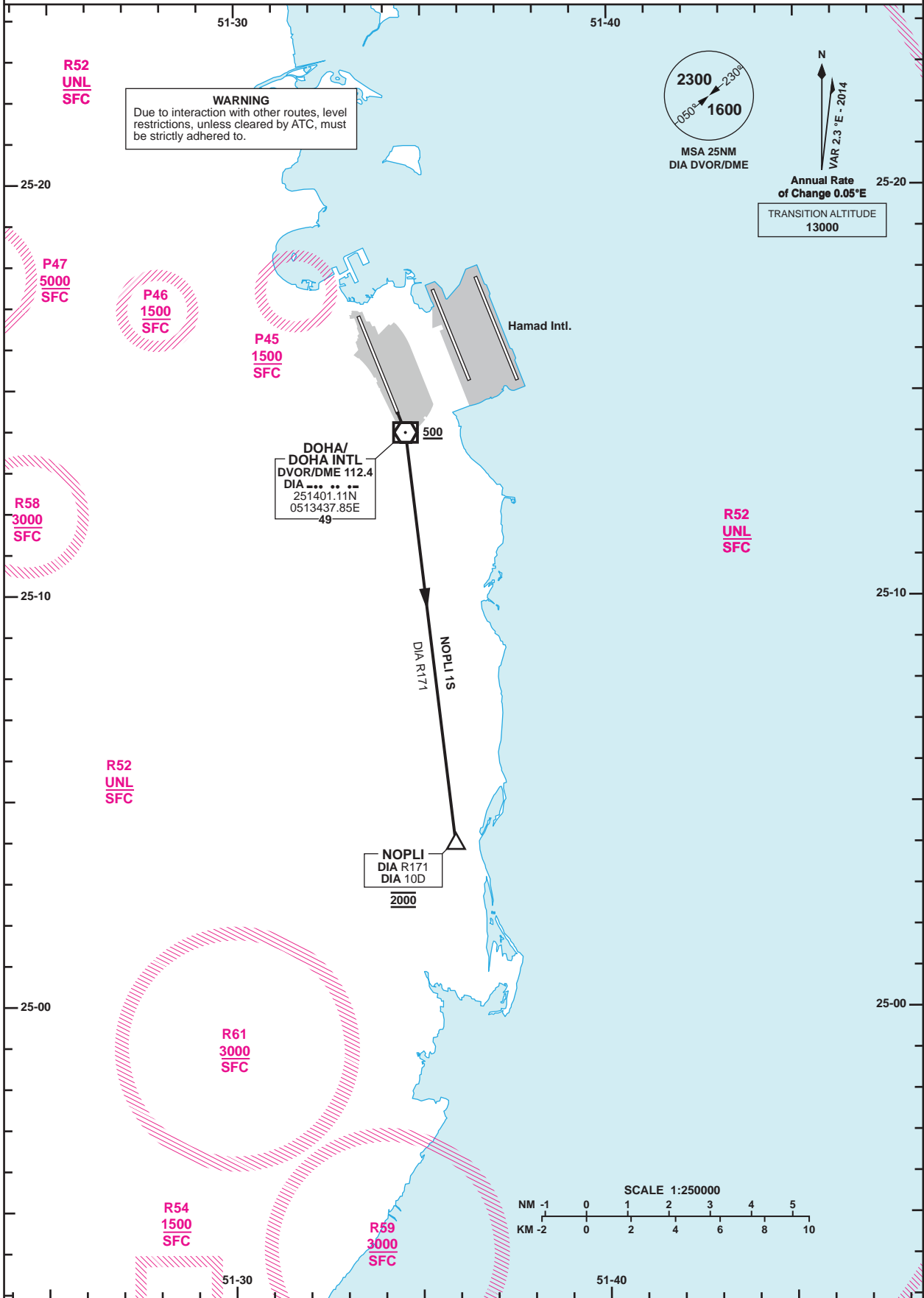


**STANDARD DEPARTURE  
CHART - INSTRUMENT  
(SID) - ICAO**

DIST IN NM  
BEARINGS ARE MAGNETIC  
ALTITUDES AND ELEV IN FEET

DOHA RADAR 121.10  
DOHA APP 119.725 / 120.60  
TWR 118.90 / 119.025

**DOHA/Doha Intl. (OTBD)  
RWY 15  
NOPLI 1S**



Route Designator	Routeing			
<b>NOPLI 1S</b>	Climb straight ahead to <b>500</b> . Turn right to intercept <b>DIA R171</b> to <b>NOPLI (DIA10D)</b> at <b>2000</b> . Continue as directed.			
GENERAL INFORMATION : 1. Close-in obstacles exist.				
RWY	Primary SIDs	Initial Contact	Initial Altitude	Radio Fail Procedures
15	<b>NOPLI 1S</b>	DEPs	2000	Execute three right-hand orbits at NOPLI at 2000. Continue right-hand orbit climbing to 5000. Proceed direct to first enroute waypoint then continue as flight planned or proceed direct to DIA DVOR and follow the ILS 15 approach procedure to land at OTBD.

Changes: Updated MSA.