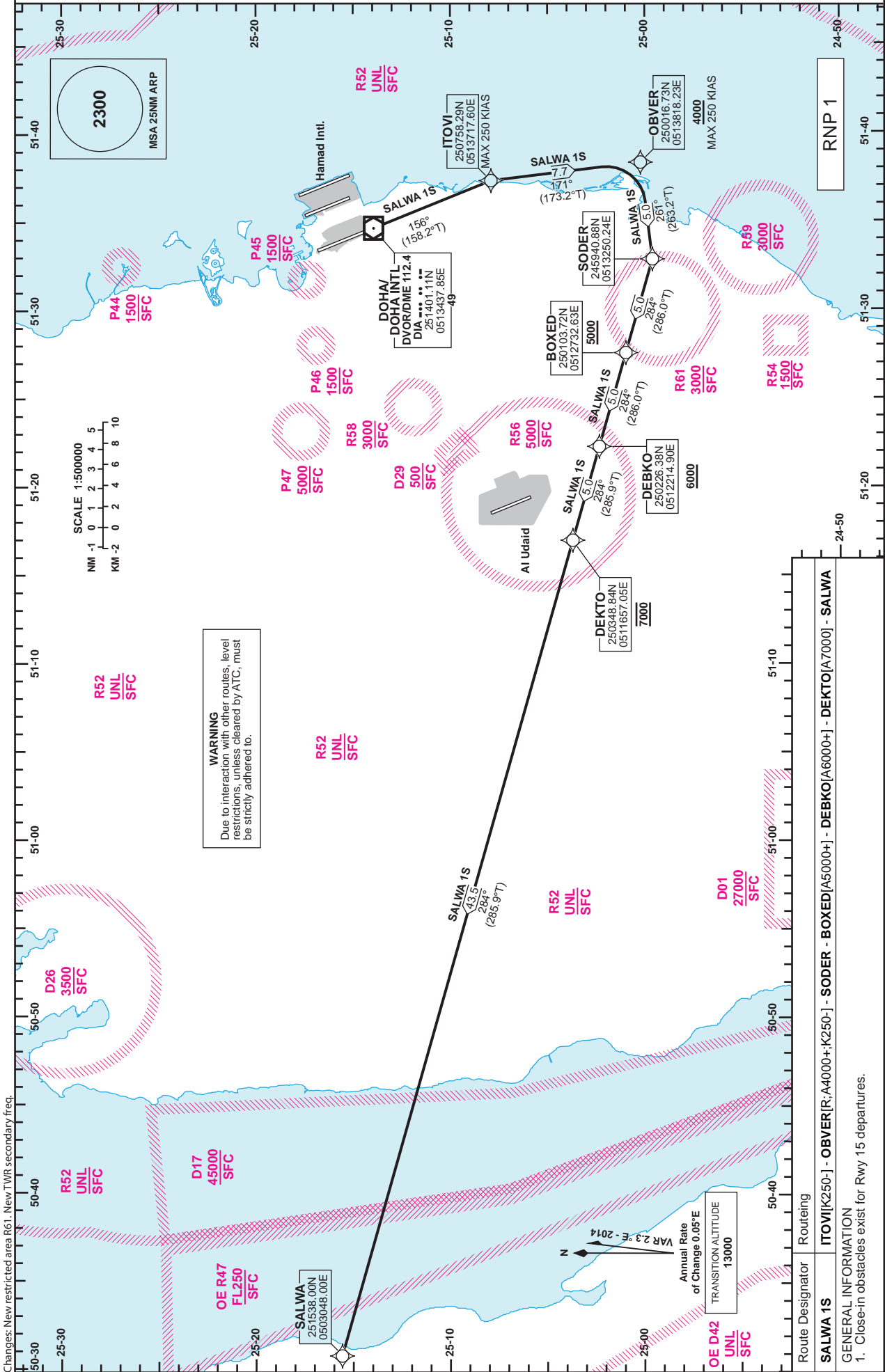


**STANDARD DEPARTURE
CHART - INSTRUMENT
(SID) - ICAO**

DIST IN NM
BEARINGS ARE MAGNETIC
ALTITUDES AND ELEV IN FEET

DOHA RADAR 121.10
DOHA APP 119.725 / 120.60
TWR 118.90 / 119.025

**DOHA/Doha Intl. (OTBD)
RNP RWY 15
SALWA 1S**



**STANDARD DEPARTURE
 CHART - INSTRUMENT
 (SID) - ICAO**

**DOHA/Doha Intl.(OTBD)
 RNP RWY 15
 SALWA 1S**

TABULAR DESCRIPTION

| RNP SID SALWA 1S | | | | | | | | | | | |
|------------------|-----------------|---------------------|----------|---------------|-----------------------|---------------|----------------|---------------|------------|----------------|--------------------------|
| Serial Num | Path Descriptor | Waypoint Identifier | Fly-over | Course °M(°T) | Magnetic Variation(°) | Distance (NM) | Turn Direction | Altitude (ft) | Speed (kt) | VPA(°)/TCH(ft) | Navigation Specification |
| 1 | CF | ITОВI | - | 156 (158.2) | 2.3 | - | - | - | -250 | - | RNP 1 |
| 2 | TF | OBVER | - | 171 (173.2) | 2.3 | 7.7 | R | +4000 | -250 | - | RNP 1 |
| 3 | TF | SODER | - | 261 (263.2) | 2.3 | 5.0 | - | - | - | - | RNP 1 |
| 4 | TF | BOXED | - | 284 (286.0) | 2.3 | 5.0 | - | +5000 | - | - | RNP 1 |
| 5 | TF | DEBKO | - | 284 (286.0) | 2.3 | 5.0 | - | +6000 | - | - | RNP 1 |
| 6 | TF | DEKTO | - | 284 (285.9) | 2.3 | 5.0 | - | @7000 | - | - | RNP 1 |
| 7 | TF | SALWA | - | 284 (285.9) | 2.3 | 43.5 | - | - | - | - | RNP 1 |

WAYPOINT LIST

| RNP SID SALWA 1S | |
|---------------------|------------------------|
| Waypoint Identifier | Coordinates |
| ITОВI | 250758.29N 0513717.60E |
| OBVER | 250016.73N 0513818.23E |
| SODER | 245940.88N 0513250.24E |
| BOXED | 250103.72N 0512732.63E |
| DEBKO | 250226.38N 0512214.90E |
| DEKTO | 250348.84N 0511657.05E |
| SALWA | 251538.00N 0503048.00E |