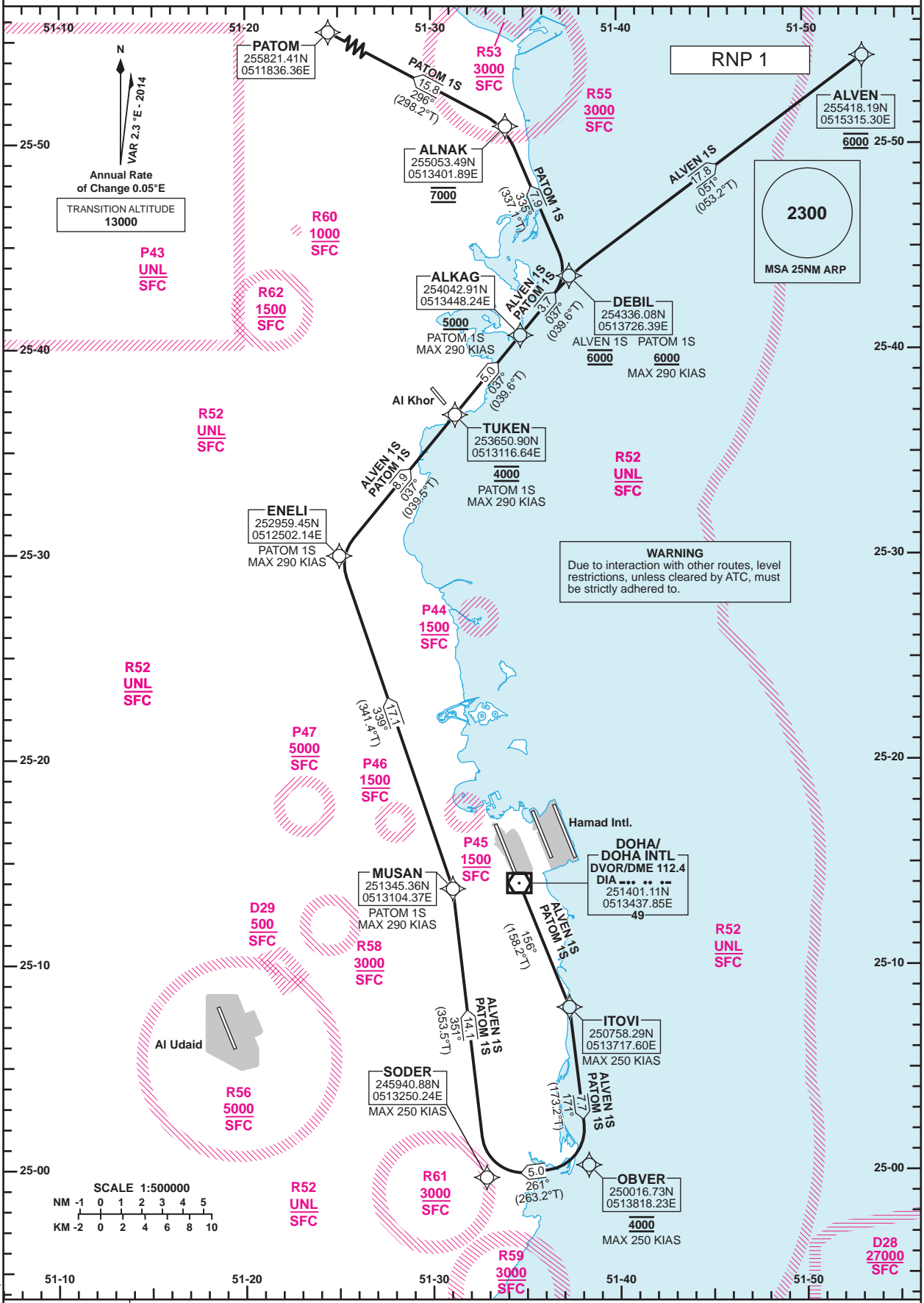


**STANDARD DEPARTURE CHART - INSTRUMENT (SID) - ICAO**

**DOHA/Doha Intl. (OTBD) RNP RWY 15 ALVEN 1S /PATOM 1S**

DIST IN NM  
BEARINGS ARE MAGNETIC  
ALTITUDES AND ELEV IN FEET

DOHA RADAR 121.10  
DOHA APP 119.725 / 120.60  
TWR 118.90 / 119.025



Route Designator	Routing
ALVEN 1S	ITОВI[K250-] - OBVER[R;A4000;K250-] - SODER[R;K250-] - MUSAN - ENELI - TUKEN[A4000] - ALKAG[A5000+] - DEBIL[A6000] - ALVEN[A6000]
PATOM 1S	ITОВI[K250-] - OBVER[R;A4000;K250-] - SODER[R;K250-] - MUSAN[K290-] - ENELI[K290-] - TUKEN[A4000;K290-] - ALKAG[A5000+;K290-] - DEBIL[A6000+;K290-] - ALNAK[A7000] - PATOM

GENERAL INFORMATION  
1. Close-in obstacles exist for Rwy 15 departures.

Changes: R62 lateral limits (radius) increased to 2NM.

STANDARD DEPARTURE  
CHART - INSTRUMENT  
(SID) - ICAO

DOHA/Doha Intl.(OTBD)  
RNP RWY 15  
ALVEN 1S /PATOM 1S

TABULAR DESCRIPTION

RNP SID ALVEN 1S											
Serial Num	Path Descriptor	Waypoint Identifier	Fly-over	Course °M(°T)	Magnetic Variation(°)	Distance (NM)	Turn Direction	Altitude (ft)	Speed (kt)	VPA(°)/TCH(ft)	Navigation Specification
1	CF	ITОВI	-	156 (158.2)	2.3	-	-	-	-250	-	RNP 1
2	TF	OBVER	-	171 (173.2)	2.3	7.7	R	@4000	-250	-	RNP 1
3	TF	SODER	-	261 (263.2)	2.3	5.0	R	-	-250	-	RNP 1
4	TF	MUSAN	-	351 (353.5)	2.3	14.1	-	-	-	-	RNP 1
5	TF	ENELI	-	339 (341.4)	2.3	17.1	-	-	-	-	RNP 1
6	TF	TUKEN	-	037 (039.5)	2.3	8.9	-	@4000	-	-	RNP 1
7	TF	ALKAG	-	037 (039.6)	2.3	5.0	-	+5000	-	-	RNP 1
8	TF	DEBIL	-	037 (039.6)	2.3	3.7	-	@6000	-	-	RNP 1
9	TF	ALVEN	-	051 (053.2)	2.3	17.8	-	@6000	-	-	RNP 1

RNP SID PATOM 1S											
Serial Num	Path Descriptor	Waypoint Identifier	Fly-over	Course °M(°T)	Magnetic Variation(°)	Distance (NM)	Turn Direction	Altitude (ft)	Speed (kt)	VPA(°)/TCH(ft)	Navigation Specification
1	CF	ITОВI	-	156 (158.2)	2.3	-	-	-	-250	-	RNP 1
2	TF	OBVER	-	171 (173.2)	2.3	7.7	R	@4000	-250	-	RNP 1
3	TF	SODER	-	261 (263.2)	2.3	5.0	R	-	-250	-	RNP 1
4	TF	MUSAN	-	351 (353.5)	2.3	14.1	-	-	-290	-	RNP 1
5	TF	ENELI	-	339 (341.4)	2.3	17.1	-	-	-290	-	RNP 1
6	TF	TUKEN	-	037 (039.5)	2.3	8.9	-	@4000	-290	-	RNP 1
7	TF	ALKAG	-	037 (039.6)	2.3	5.0	-	+5000	-290	-	RNP 1
8	TF	DEBIL	-	037 (039.6)	2.3	3.7	-	+6000	-290	-	RNP 1
9	TF	ALNAK	-	335 (337.1)	2.3	7.9	-	@7000	-	-	RNP 1
10	TF	PATOM	-	296 (298.2)	2.3	15.8	-	-	-	-	RNP 1

WAYPOINT LIST

RNP SID ALVEN 1S /PATOM 1S	
Waypoint Identifier	Coordinates
ITОВI	250758.29N 0513717.60E
OBVER	250016.73N 0513818.23E
SODER	245940.88N 0513250.24E
MUSAN	251345.36N 0513104.37E
ENELI	252959.45N 0512502.14E
TUKEN	253650.90N 0513116.64E
ALKAG	254042.91N 0513448.24E
DEBIL	254336.08N 0513726.39E
ALVEN	255418.19N 0515315.30E
ALNAK	255053.49N 0513401.89E
PATOM	255821.41N 0511836.36E