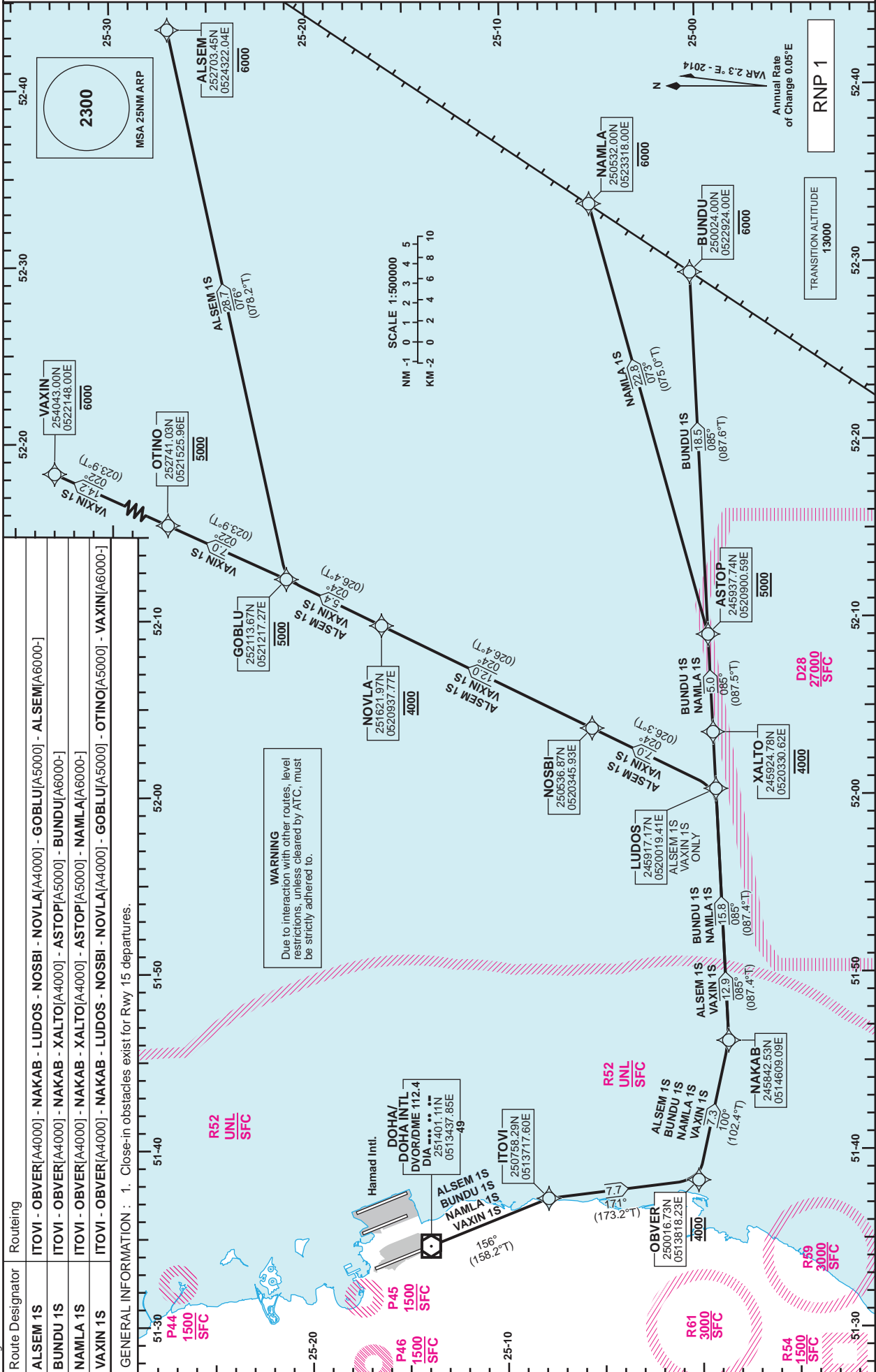


**STANDARD DEPARTURE
CHART - INSTRUMENT
(SID) - ICAO**

DIST IN NM
BEARINGS ARE MAGNETIC
ALTITUDES AND ELEV IN FEET

DOHA RADAR 121.10
DOHA APP 119.725 / 120.60
TWR 118.90 / 119.025

**DOHA/Doha Intl. (OTBD)
RNP RWY 15
ALSEM 1S /BUNDU 1S /
NAMLA 1S /VAXIN 1S**



Changes: Patis renamed to VAXIN.

Route Designator	Routing
ALSEM 1S	ITOI - OBVER[A4000] - NAKAB - LUDOS - NOSBI - NOVLA[A4000] - GOBLU[A5000] - ALSEM[A6000]
BUNDU 1S	ITOI - OBVER[A4000] - NAKAB - XALTO[A4000] - ASTOP[A5000] - BUNDU[A6000]
NAMLA 1S	ITOI - OBVER[A4000] - NAKAB - XALTO[A4000] - ASTOP[A5000] - NAMLA[A6000]
VAXIN 1S	ITOI - OBVER[A4000] - NAKAB - LUDOS - NOSBI - NOVLA[A4000] - GOBLU[A5000] - OTINO[A5000] - VAXIN[A6000]

STANDARD DEPARTURE
CHART - INSTRUMENT
→ (SID) - ICAO

DOHA/Doha Intl.(OTBD)
RNP RWY 15
ALSEM 1S /BUNDU 1S /NAMLA 1S /VAXIN 1S

TABULAR DESCRIPTION

RNP SID ALSEM 1S

Serial Num	Path Descriptor	Waypoint Identifier	Fly-over	Course °M(°T)	Magnetic Variation(°)	Distance (NM)	Turn Direction	Altitude (ft)	Speed (kt)	VPA(°)/TCH(ft)	Navigation Specification
1	CF	ITОВI	-	156 (158.2)	2.3	-	-	-	-	-	RNP 1
2	TF	OBVER	-	171 (173.2)	2.3	7.7	-	@4000	-	-	RNP 1
3	TF	NAKAB	-	100 (102.4)	2.3	7.3	-	-	-	-	RNP 1
4	TF	LUDOS	-	085 (087.4)	2.3	12.9	-	-	-	-	RNP 1
5	TF	NOSBI	-	024 (026.3)	2.3	7.0	-	-	-	-	RNP 1
6	TF	NOVLA	-	024 (026.4)	2.3	12.0	-	@4000	-	-	RNP 1
7	TF	GOBLU	-	024 (026.4)	2.3	5.4	-	@5000	-	-	RNP 1
8	TF	ALSEM	-	076 (078.2)	2.3	28.7	-	-6000	-	-	RNP 1

RNP SID BUNDU 1S

Serial Num	Path Descriptor	Waypoint Identifier	Fly-over	Course °M(°T)	Magnetic Variation(°)	Distance (NM)	Turn Direction	Altitude (ft)	Speed (kt)	VPA(°)/TCH(ft)	Navigation Specification
1	CF	ITОВI	-	156 (158.2)	2.3	-	-	-	-	-	RNP 1
2	TF	OBVER	-	171 (173.2)	2.3	7.7	-	@4000	-	-	RNP 1
3	TF	NAKAB	-	100 (102.4)	2.3	7.3	-	-	-	-	RNP 1
4	TF	XALTO	-	085 (087.4)	2.3	15.8	-	@4000	-	-	RNP 1
5	TF	ASTOP	-	085 (087.5)	2.3	5.0	-	@5000	-	-	RNP 1
6	TF	BUNDU	-	085 (087.6)	2.3	18.5	-	-6000	-	-	RNP 1

RNP SID NAMLA 1S

Serial Num	Path Descriptor	Waypoint Identifier	Fly-over	Course °M(°T)	Magnetic Variation(°)	Distance (NM)	Turn Direction	Altitude (ft)	Speed (kt)	VPA(°)/TCH(ft)	Navigation Specification
1	CF	ITОВI	-	156 (158.2)	2.3	-	-	-	-	-	RNP 1
2	TF	OBVER	-	171 (173.2)	2.3	7.7	-	@4000	-	-	RNP 1
3	TF	NAKAB	-	100 (102.4)	2.3	7.3	-	-	-	-	RNP 1
4	TF	XALTO	-	085 (087.4)	2.3	15.8	-	@4000	-	-	RNP 1
5	TF	ASTOP	-	085 (087.5)	2.3	5.0	-	@5000	-	-	RNP 1
6	TF	NAMLA	-	073 (075.0)	2.3	22.8	-	-6000	-	-	RNP 1

RNP SID VAXIN 1S

Serial Num	Path Descriptor	Waypoint Identifier	Fly-over	Course °M(°T)	Magnetic Variation(°)	Distance (NM)	Turn Direction	Altitude (ft)	Speed (kt)	VPA(°)/TCH(ft)	Navigation Specification
1	CF	ITОВI	-	156 (158.2)	2.3	-	-	-	-	-	RNP 1
2	TF	OBVER	-	171 (173.2)	2.3	7.7	-	@4000	-	-	RNP 1
3	TF	NAKAB	-	100 (102.4)	2.3	7.3	-	-	-	-	RNP 1
4	TF	LUDOS	-	085 (087.4)	2.3	12.9	-	-	-	-	RNP 1
5	TF	NOSBI	-	024 (026.3)	2.3	7.0	-	-	-	-	RNP 1
6	TF	NOVLA	-	024 (026.4)	2.3	12.0	-	@4000	-	-	RNP 1
7	TF	GOBLU	-	024 (026.4)	2.3	5.4	-	@5000	-	-	RNP 1
8	TF	OTINO	-	022 (023.9)	2.3	7.0	-	@5000	-	-	RNP 1
9	TF	VAXIN	-	022 (023.9)	2.3	14.2	-	-6000	-	-	RNP 1

WAYPOINT LIST

RNP SID ALSEM 1S /BUNDU 1S /NAMLA 1S /VAXIN 1S	
Waypoint Identifier	Coordinates
ITОВI	250758.29N 0513717.60E
OBVER	250016.73N 0513818.23E
NAKAB	245842.53N 0514609.09E
LUDOS	245917.17N 0520019.41E
NOSBI	250536.87N 0520345.93E
NOVLA	251621.97N 0520937.77E
GOBLU	252113.67N 0521217.27E

RNP SID ALSEM 1S /BUNDU 1S /NAMLA 1S /VAXIN 1S	
Waypoint Identifier	Coordinates
ALSEM	252703.45N 0524322.04E
XALTO	245924.78N 0520330.62E
ASTOP	245937.74N 0520900.59E
BUNDU	250024.00N 0522924.00E
NAMLA	250532.00N 0523318.00E
OTINO	252741.03N 0521525.96E
VAXIN	254043.00N 0522148.00E