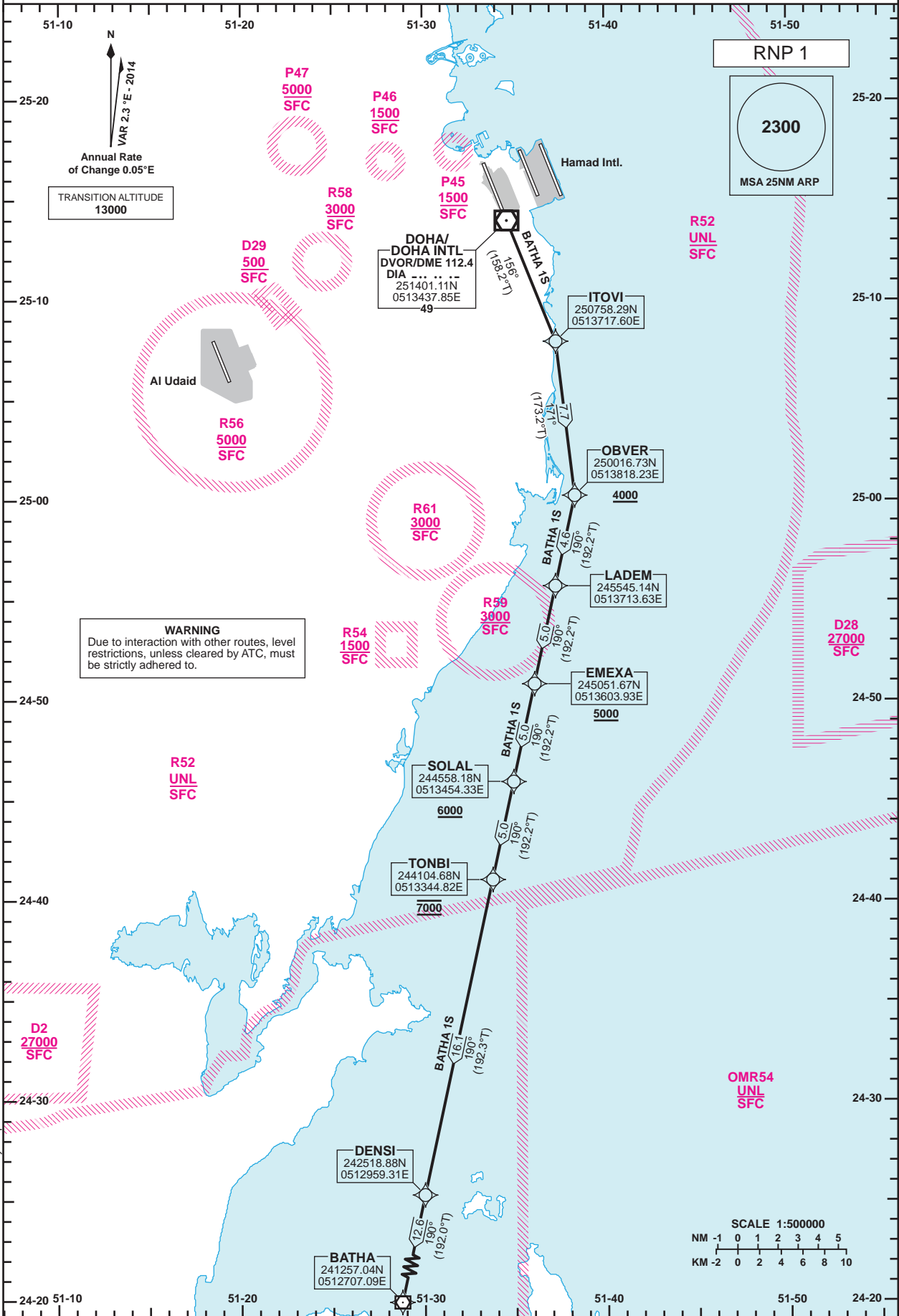


STANDARD DEPARTURE CHART - INSTRUMENT (SID) - ICAO

DIST IN NM
BEARINGS ARE MAGNETIC
ALTITUDES AND ELEV IN FEET

DOHA RADAR 121.10
DOHA APP 119.725 / 120.60
TWR 118.90 / 119.025

**DOHA/Doha Intl. (OTBD)
RNP RWY 15
BATHA 1S**



Route Designator	Routing
BATHA 1S	ITOVI - OBVER[A4000+] - LADEM - EMEXA[A5000+] - SOLAL[A6000+] - TONBI[A7000] - DENSI - BATHA

GENERAL INFORMATION
1. Close-in obstacles exist for Rwy 15 departures.

Changes: New restricted area R61. New TWR secondary freq.

STANDARD DEPARTURE
 CHART-INSTRUMENT
 (SID)-ICAO

DOHA/Doha Intl.(OTBD)
 RNP RWY 15
 BATHA 1S

TABULAR DESCRIPTION

RNP SID BATHA 1S											
Serial Num	Path Descriptor	Waypoint Identifier	Fly-over	Course °M(°T)	Magnetic Variation(°)	Distance (NM)	Turn Direction	Altitude (ft)	Speed (kt)	VPA(°)/TCH(ft)	Navigation Specification
1	CF	ITОВI	-	156 (158.2)	2.3	-	-	-	-	-	RNP 1
2	TF	OBVER	-	171 (173.2)	2.3	7.7	-	+4000	-	-	RNP 1
3	TF	LADEM	-	190 (192.2)	2.3	4.6	-	-	-	-	RNP 1
4	TF	EMEXA	-	190 (192.2)	2.3	5.0	-	+5000	-	-	RNP 1
5	TF	SOLAL	-	190 (192.2)	2.3	5.0	-	+6000	-	-	RNP 1
6	TF	TONBI	-	190 (192.2)	2.3	5.0	-	@7000	-	-	RNP 1
7	TF	DENSI	-	190 (192.3)	2.3	16.1	-	-	-	-	RNP 1
8	TF	BATHA	-	190 (192.0)	2.3	12.6	-	-	-	-	RNP 1

WAYPOINT LIST

RNP SID BATHA 1S	
Waypoint Identifier	Coordinates
ITОВI	250758.29N 0513717.60E
OBVER	250016.73N 0513818.23E
LADEM	245545.14N 0513713.63E
EMEXA	245051.67N 0513603.93E
SOLAL	244558.18N 0513454.33E
TONBI	244104.68N 0513344.82E
DENSI	242518.88N 0512959.31E
BATHA	241257.04N 0512707.09E